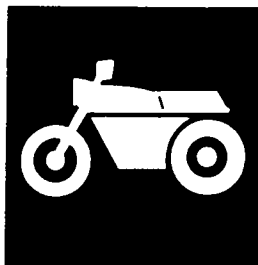


YAMAHA



**PARTS
CATALOGUE
CATALOGO
DE REPUESTOS**

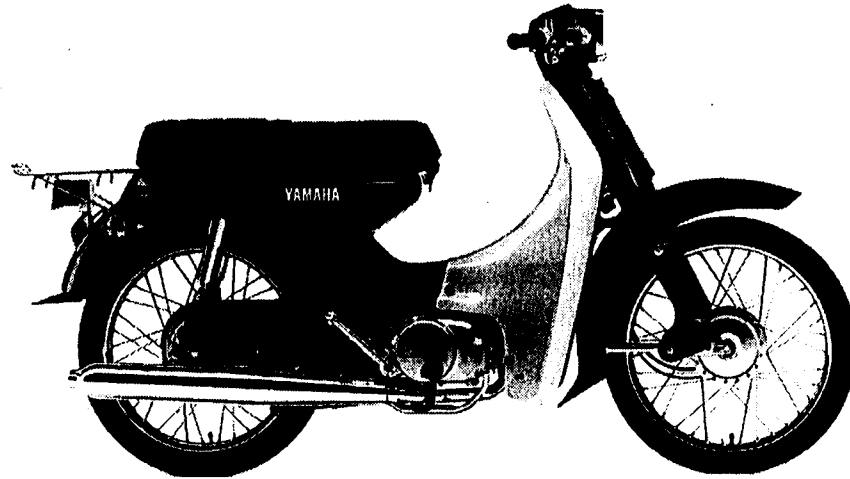
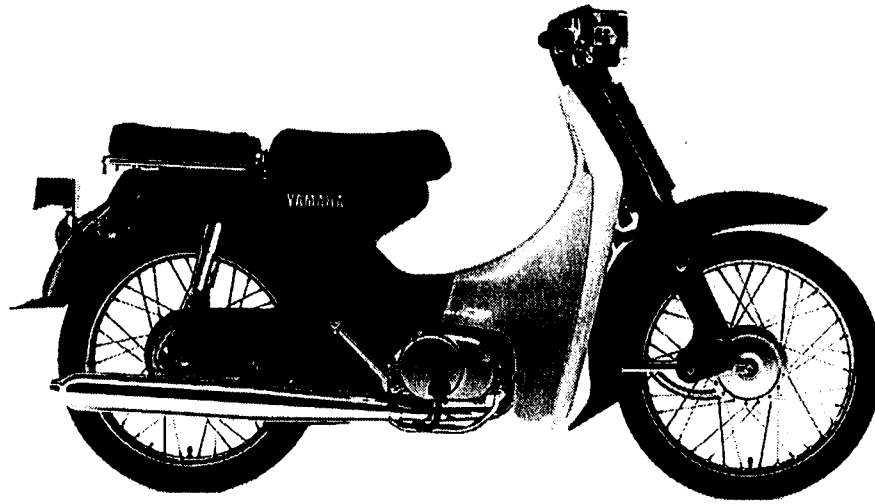
V80'98 (4GC5) C&SOUTH AMERICA

V80'98 (4GC6) C&SOUTH AMERICA

V80'98 (3NX6) COLOMBIA

YAMAHA
GENUINE
Parts & Accessories

184GC-200E1



FOREWORD

This Parts Catalogue is related to the parts for the model(s) in the below frame. When you are ordering replacement parts, please refer to this Parts Catalogue and quote both part numbers and part names correctly.

V80'98(4GC5/4GC6/3NX6)

- Modifications or additions which have been made after issue of the Parts Catalogue will be announced in the Yamaha Parts News.
It is advisable that you make necessary corrections to the Parts Catalogue according to the Yamaha Parts News.
- Abbreviations
The Following abbreviations are used in this Parts Catalogue.
"UR" Use specified parts number.
"UN" Use as many as needed.
"AP" Alternate Parts
"LM" Local Made (Parts need to be ordered locally)
"F#" Frame No. (Applicable machine No.)
- Parts, which are to be supplied in an assembly, are listed with a dot(.) in front of the part name as shown below.

EXAMPLE

CARBURETOR ASSY
.JET, PILOT
.NOZZLE, MAIN

- Number of component for assembly
The numeral appearing to the right of each component part indicates the quantity of parts for each assembly unit.

EXAMPLE

PART NO.	DESCRIPTION	Q'TY	REMARKS
2F5-83310-60	FRONT FLASHER LIGHT ASSY	2	
115-83311-60	.BULB (6V-18W)	1	
1M1-83309-60	.REFLECTOR	1	

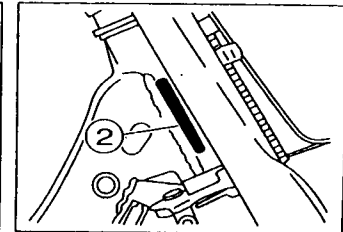
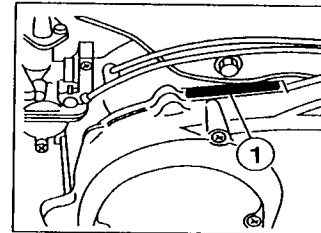
- Applicable colors of graphics are represented in the "REMARKS" as shown below.

PART NO.	DESCRIPTION	Q'TY	REMARKS
2N4-24110-00-X5	.FUEL TANK COMP.	2	MXR
3J1-24240-10	.GRAPHIC, FUEL TANK	1	for MXR

- Applicable Serial No.

① Engine Serial No.

② Frame Serial No.



- Note that the illustrations for reference in finding parts numbers, not to be used for assembling. When assembling, please use the applicable service manual.
- The asterisk (*) before a reference number indicates modification items after the first edition.

PROLOGO

Este Catálogo de Repuestos corresponde a las piezas para el(los) modelo(s) del recuadro siguiente. Al formular el pedido de repuestos, se ruega citar este Catálogo de Repuestos y especificar correctamente los números de parte y los nombres de parte.

V80'98(4GC5/4GC6/3NX6)

- Las modificaciones y agregados que se hayan realizado después de la edición de este Catálogo de Repuestos, serán anunciados en las Informaciones de Recambios Yamaha.
- Abreviaciones**
En este Catálogo de Repuestos se emplean las siguientes abreviaciones.
"UR" Usar el número de partes especificado
"UN" Usar la cantidad necesaria
"AP" Piezas sustitutivas
"LM" Fabricación local (Partes necesarias que se pedirán localmente)
"F#" No. de bastidor aplicable
- Las piezas suministradas como conjunto se describen con un punto (.) que precede al nombre de la pieza como se indica a continuación.

EJEMPLO

CONJUNTO CARBURADOR

.INYECTOR, piloto

.BOQUILLA, principal

- Cantidad de componentes de un conjunto
La numeración que aparece a la derecha de cada descripción, indica la cantidad de piezas por cada unidad de conjunto.

EJEMPLO

PIEZAS NO.	DESCRIPCION	CANT.	OBSERVACION
2F5-83310-60	ENSAMBLAJE DE LA LUZ	2	
115-83311-60	.BOMBILLA (6V-1 8W)	1	
1M1-83309-60	.REFLECTOR	1	

- Los colores de los componentes se indican como sigue en la columna de "OBSERVACIONES".

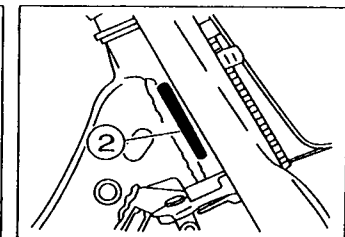
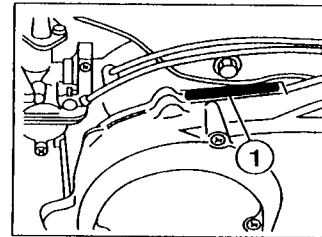
EJEMPLO

PIEZAS NO.	DESCRIPCION	CANT.	OBSERVACION
2N4-24110-00-X5	.COMP. DEL TANQUE	2	MXR
3J1-24240-10	.GRAFICO, DEL TANQUE	1	para MXR

- Números de Serie

① No. de Serie del motor.

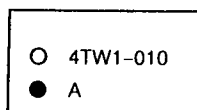
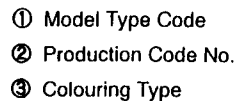
② No. de Serie del bastidor



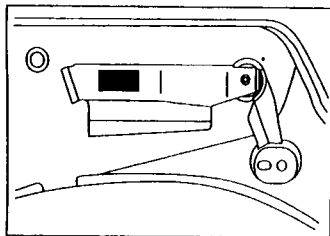
- Debe tenerse en cuenta que las ilustraciones sirven como guía para la búsqueda de las referencias y no deben usarse para el montaje. Durante el montaje, se recomienda usar el manual de Taller correspondiente.
- EL asterisco (*) antes del número de referencia indica los elementos modificados después de la primera edición.

•

- ## (2) "Model Label" Indication



- ### (3) Model Label Affixing Location



- (4) Model Code – Production Code Number of Model Listed in This Parts Catalog

[illegible]

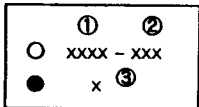
- ### (5) Colouring Information

Model Code	Colouring type code	Colour code	Colour Name	Abbreviation
4GC5	A	0376	DEEP RED COCKTAIL 2	DRC2
4GC6	B	00H9	BLACK GOLD	BG
3NX6	C	0266	VERY DARK BLUE METALLIC 3	VDBM3

ROTULO DE MODELO

- (1) El rótulo llamada "Rótulo de Modelo" está en la ubicación indicada abajo en el (3). Cuando se utilice este catálogo de partes, se ruega cotejar entre el "código de modelo-número de código de producción" del catálogo y el "código de modelo-número de código de producción" indicado en el Rótulo de Modelo fijado en el producto correspondiente.

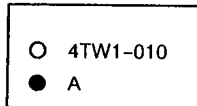
- (2) Indicación del "Rótulo de Modelo"



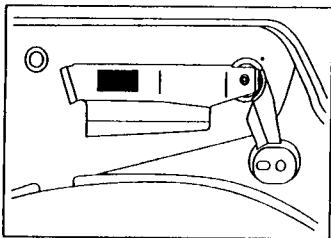
① Código de tipo de Modelo

② Número de código de Producción

③ Tipo de color



- ### (3) Ubicación de fijación del Rótulo de Modelo



- (4) Código de Modero-Número de código de Producción del Modelo Listado en este Catálogo de Partes

[illegible]

- ### (5) Información de Color

Código de Modelo	Código de tipo de color	Código de color	Nombre de color	Abreviatura
4GC5	A	0376	DEEP RED COCKTAIL 2	DRC2
4GC6	B	00H9	BLACK GOLD	BG
3NX6	C	0266	VERY DARK BLUE METALLIC 3	VDBM3

CONTENTS

ENGINE

CYLINDER	B2
CRANKSHAFT. PISTON	B3
OIL PUMP	B4
INTAKE	B5
CARBURETOR	B7
EXHAUST	B9
CRANKCASE	B10
CRANKCASE COVER 1	B11
STARTER	B12
CLUTCH	B13
TRANSMISSION	B15
SHIFT CAM. FORK	C2
SHIFT SHAFT	C3

CHASSIS

FRAME	C4
FENDER	C5
SIDE COVER	C6
OIL TANK	C8
REAR ARM. SUSPENSION	C9
STEERING	C11
FRONT FORK	C12
FUEL TANK	C14
SEAT	C15
SEAT 2	D2
FRONT WHEEL	D3
REAR WHEEL	D5
STEERING HANDLE. CABLE	D7
STAND. FOOTREST	D9
LEG SHIELD	D11
GENERATOR	D12
FLASHER LIGHT	D13

METER	D15
HEADLIGHT	E2
TAILLIGHT	E3
TAILLIGHT 2	E4
HANDLE SWITCH. LEVER	E5
ELECTRICAL 1	E6
ELECTRICAL 2	E8

INDEX

NUMERICAL INDEX	M1
-----------------------	----

CONTENIDO

MOTOR

CILINDRO	B2
CIGUENAL. PISTON	B3
BOMBA DE ACEITE	B4
ADMISION	B5
CARBURADOR	B7
DESCARGA	B9
CARTER	B10
CUBIERTA DE CARTER 1	B11
ARRANQUE	B12
EMBRAGUE	B13
TRANSMISION	B15
LEVA DE CAMBIO. HORQ	C2
EJE DE CAMBIO. PEDAL	C3

SHASIS

CUADRO	C4
GUARDABARRO	C5
CUBIERTA LATERAL	C6
DEPOSITO DE ACEITE	C8
BRAZO TRASERO. SUSPENSION	C9
DIRECCION	C11
HORQUILLA DELANTERA	C12
DEPOSITO DE COMBUSTIBLE	C14
ASIENTO	C15
ASIENTO 2	D2
RUEDA DELANTERA	D3
RUEDA TRASERA	D5
MANUBRIO. CABLE	D7
SOPORTE. APOYAPIE	D9
PATA PROTEGIDA	D11
GENERADOR	D12
LUZ DE DESTELLADOR	D13

MEDIDOR	D15
FARO DELANTERO	E2
LUZ DE COLA	E3
LUZ DE COLA 2	E4
INTERRUPTOR DE MANIJA. PALANCA	E5
EQUIPO ELECTRICO 1	E6
EQUIPO ELECTRICO 2	E8

INDICE

NUMERICAL INDEX	M1
-----------------------	----



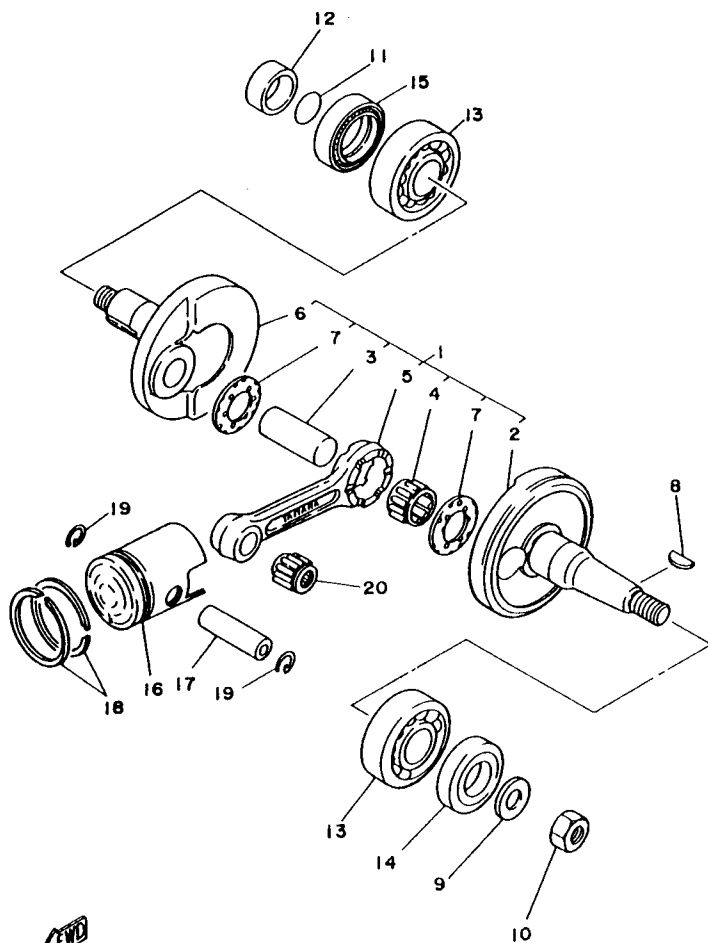
3N X 3200-4010

FIG. 1 CYLINDER

CILINDRO

REF. NO.	PART NO. CODIGO NO.	DESCRIPTION DESCRIPTION	4GC6	4GC5	3NX6	REMARKS OBSERVACION
1	5T0-11111-00	HEAD, CYLINDER 1 CULATA CILINDRO 1	1	1	1	
2	35X-11181-00	GASKET, CYLINDER HEAD 1 JUNTA, DE CULATA 1	1	1	1	
3	94701-00108	PLUG, SPARK (NGK BP6HS) BUJIA (NGK BP6HS)	1	1	1	UR
	94701-00175	PLUG, SPARK (ND-W20FP) BUJIA (ND-W20FP)	1	1	1	UR
4	463-11161-01	ABSORBER 1 AMORTIGUADOR 1	9	9	9	
5	18E-11311-00	CYLINDER 1 CILINDRO 1	1	1	1	
6	3E5-11162-00	ABSORBER 2 AMORTIGUADOR 2	2	2	2	
7	4AW-11351-00	GASKET, CYLINDER JUNTA, DE CILINDRO	1	1	1	
8	90116-07035	BOLT, STUD ESPARRAGO	4	4	4	
9	90179-07381	NUT TUERCA	4	4	4	

B2

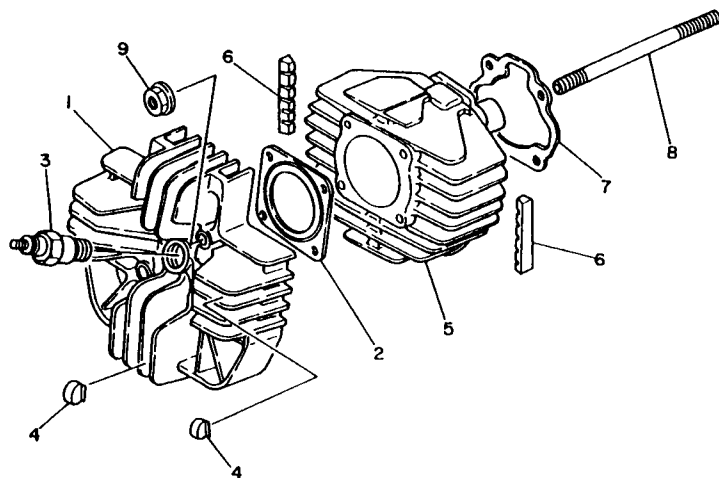


4GC3200-6020

FIG. 2 CRANKSHAFT. PISTON

CIGUENAL. PISTON

REF. NO.	PART NO. CODIGO NO.	DESCRIPTION	4GC6	4GC5	3NX6	REMARKS OBSERVACION
1	1HA-11400-00	CRANKSHAFT ASSY CIGUENAL COMPLETO	1	1	1	
2	1W7-11412-00	.CRANK 1 .MANIVELA 1	1	1	1	
3	2Y1-11681-00	.PIN, CRANK 1 .PASADOR MANIVELA 1	1	1	1	
4	93310-420F2	.BEARING .COJINETE	1	1	1	
5	1W7-11651-00	.ROD, CONNECTING .BIELA	1	1	1	
6	1HA-11422-00	.CRANK 2 .MANIVELA 2	1	1	1	
7	90209-20159	.WASHER .ARANDELA DE SEPARACION	2	2	2	
8	90280-03017	KEY, WOODRUFF CUNA WOODRUFF	1	1	1	
9	90201-12535	WASHER, PLATE ARANDELA PLANA	1	1	1	
10	95317-12600	NUT TUERCA	1	1	1	
11	93210-18023	O-RING ANILLO O	1	1	1	
12	90387-20603	COLLAR CASQUILLO CON VALONA	1	1	1	
13	93306-20517	BEARING (B6205) COJINETE	2	2	2	
14	93103-25098	OIL SEAL SELLO ACEITE	1	1	1	
15	93103-32099	OIL SEAL SELLO ACEITE	1	1	1	
16	18E-11631-00-96	PISTON (STD) PISTON(STD)	1	1	1	
	18E-11635-00	PISTON (0.25MM O/S) PISTON (0.25MM O/S)	1	1	1	AP
	18E-11636-00	PISTON (0.50MM O/S) PISTON (0.50MM O/S)	1	1	1	AP
17	527-11633-00	PIN, PISTON PASADOR, PISTON	1	1	1	
18	14N-11610-00	PISTON RING SET (STD) JUEGO DE AROS (ESTD)	1	1	1	
	14N-11610-10	PISTON RING SET (0.25MM O/S) JUEGO DE AROS (0.25MM O/S)	1	1	1	AP
	14N-11610-20	PISTON RING SET (0.50MM O/S) JUEGO DE AROS (0.50MM O/S)	1	1	1	AP
19	93450-13022	CIRCLIP BOLA	2	2	2	
20	93310-11268	BEARING COJINETE	1	1	1	



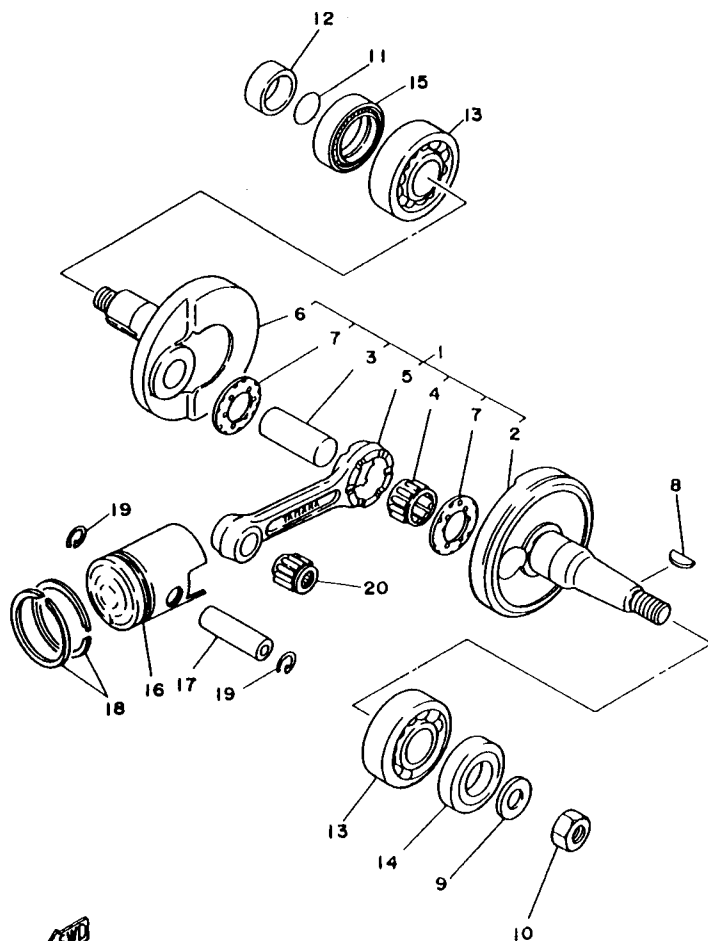
3NX3200-4010

FIG. 1 CYLINDER

CILINDRO

REF. NO.	PART NO. CODIGO NO.	DESCRIPTION DESCRIPCION	4GC6	4GC5	3NX6	REMARKS OBSERVACION
1	5T0-11111-00	HEAD, CYLINDER 1 CULATA CILINDRO 1	1	1	1	
2	35X-11181-00	GASKET, CYLINDER HEAD 1 JUNTA, DE CULATA 1	1	1	1	
3	94701-00108	PLUG, SPARK (NGK BP6HS) BUJIA (NGK BP6HS)	1	1	1	UR
	94701-00175	PLUG, SPARK (ND-W20FP) BUJIA (ND-W20FP)	1	1	1	UR
4	463-11161-01	ABSORBER 1 AMORTIGUADOR 1	9	9	9	
5	18E-11311-00	CYLINDER 1 CILINDRO 1	1	1	1	
6	3E5-11162-00	ABSORBER 2 AMORTIGUADOR 2	2	2	2	
7	4AW-11351-00	GASKET, CYLINDER JUNTA, DE CILINDRO	1	1	1	
8	90116-07035	BOLT, STUD ESPARRAGO	4	4	4	
9	90179-07381	NUT TUERCA	4	4	4	

B2

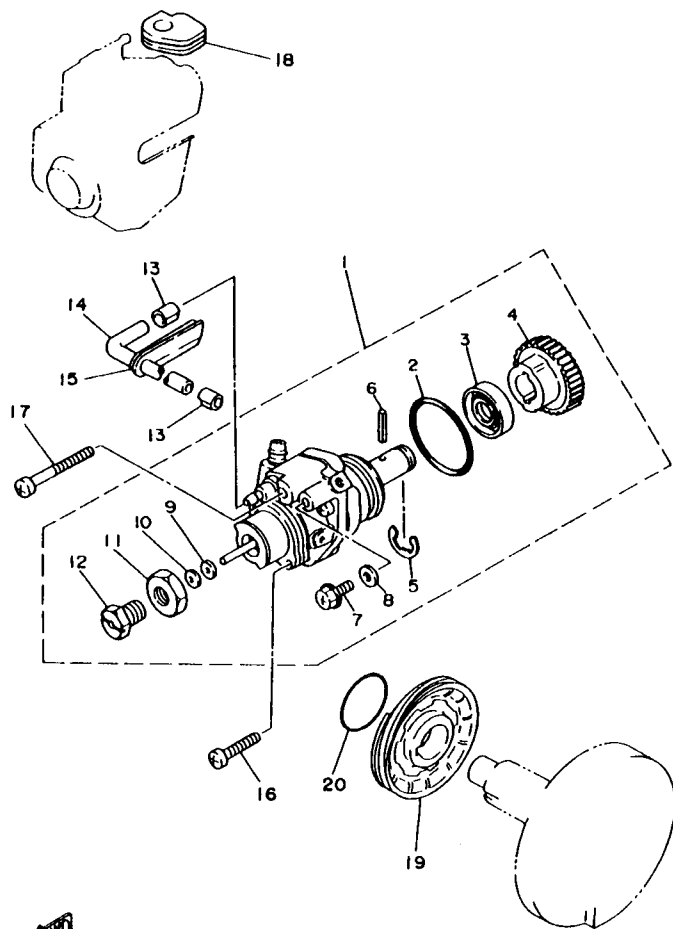


4GC3200-6020

FIG. 2 CRANKSHAFT. PISTON

CIGUENAL. PISTON

REF. NO.	PART NO. CODIGO NO.	DESCRIPTION	4GC6	4GC5	3NX6	REMARKS OBSERVACION
1	1HA-11400-00	CRANKSHAFT ASSY CIGUENAL COMPLETO	1	1	1	
2	1W7-11412-00	.CRANK 1 .MANIVELA 1	1	1	1	
3	2Y1-11681-00	.PIN, CRANK 1 .PASADOR MANIVELA 1	1	1	1	
4	93310-420F2	.BEARING .COJINETE	1	1	1	
5	1W7-11651-00	.ROD, CONNECTING BIELA	1	1	1	
6	1HA-11422-00	.CRANK 2 .MANIVELA 2	1	1	1	
7	90209-20159	.WASHER .ARANDELA DE SEPARACION	2	2	2	
8	90280-03017	KEY, WOODRUFF CUNA WOODRUFF	1	1	1	
9	90201-12535	WASHER, PLATE ARANDELA PLANA	1	1	1	
10	95317-12600	NUT TUERCA	1	1	1	
11	93210-18023	O-RING ANILLO O	1	1	1	
12	90387-20603	COLLAR CASQUILLO CON VALONA	1	1	1	
13	93306-20517	BEARING (B6205) COJINETE	2	2	2	
14	93103-25098	OIL SEAL SELLO ACEITE	1	1	1	
15	93103-32099	OIL SEAL SELLO ACEITE	1	1	1	
16	18E-11631-00-96	PISTON (STD) PISTON(STD)	1	1	1	
	18E-11635-00	PISTON (0.25MM O/S) PISTON (0.25MM O/S)	1	1	1	AP
	18E-11636-00	PISTON (0.50MM O/S) PISTON (0.50MM O/S)	1	1	1	AP
17	527-11633-00	PIN, PISTON PASADOR, PISTON	1	1	1	
18	14N-11610-00	PISTON RING SET (STD) JUEGO DE AROS (ESTD)	1	1	1	
	14N-11610-10	PISTON RING SET (0.25MM O/S) JUEGO DE AROS (0.25MM O/S)	1	1	1	AP
	14N-11610-20	PISTON RING SET (0.50MM O/S) JUEGO DE AROS (0.50MM O/S)	1	1	1	AP
19	93450-13022	CIRCLIP BOLA	2	2	2	
20	93310-11268	BEARING COJINETE	1	1	1	

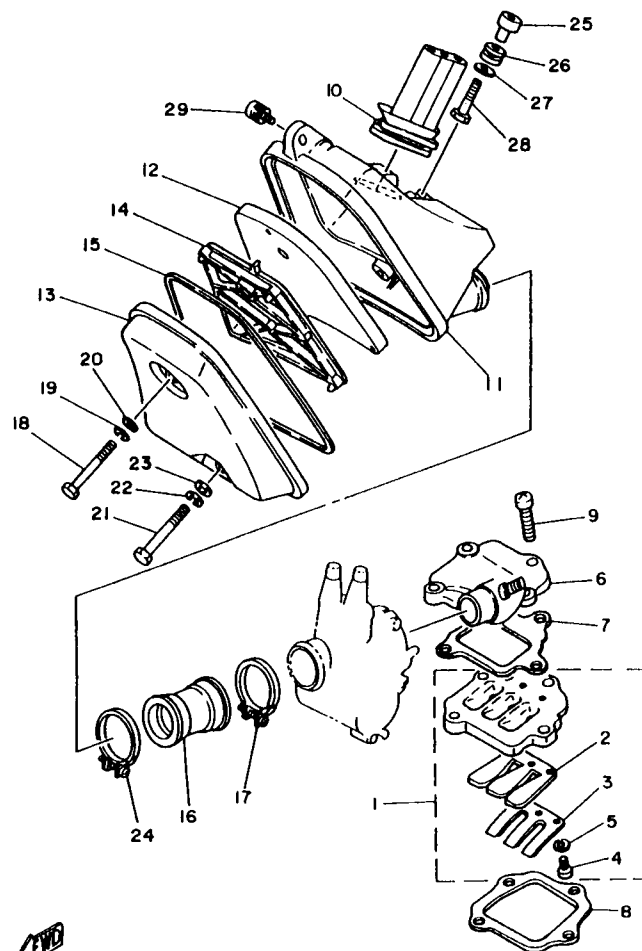


46C3200-6030

FIG. 3 OIL PUMP

BOMBA DE ACEITE

REF. NO.	PART NO. CODIGO NO.	DESCRIPTION DESCRIPTION	4G06	4G05	3NX6	REMARKS OBSERVACION
1	18E-13101-00	OIL PUMP ASSY BOMBA DE ACEITE COMPLETA	1	1	1	
2	93210-26240	O-RING ANILLO O	1	1	1	
3	93101-10001	OIL SEAL SELLO ACEITE	1	1	1	
4	2T5-13124-00	GEAR, WORM WHEEL (71T) ENGREJE ROSCA SINFIN (71T)	1	1	1	
5	93430-07012	CIRCLIP BOLA	1	1	1	
6	91609-30014	PIN, SPRING PASADOR DE RESORTE	1	1	1	
7	90149-04135	SCREW TORNILLO DE REGLAJE	1	1	1	
8	90430-04004	GASKET JUNTA	1	1	1	
9	296-13147-00	SHIM CUNA	1	1	1	
10	384-13138-00	PLATE, ADJUSTING PLACA DE AJUSTE	1	1	1	
11	90170-10105	NUT TUERCA	1	1	1	
12	90401-10029	BOLT, UNION PERNO DE UNION	1	1	1	
13	90468-02033	CLIP PRESILLA	2	2	2	
14	384-13161-02	PIPE, DELIVERY 1 TUBO CONDUCTOR 1	1	1	1	
15	90480-10005	GROMMET TAPON	1	1	1	
16	98507-05020	SCREW, PAN HEAD TORNILLO DE CABEZA CON PLANA	1	1	1	
17	98507-05035	SCREW, PAN HEAD TORNILLO DE CABEZA CON PLANA	1	1	1	
18	384-13174-00	HOLDER, OIL PIPE SOPORTE, TUBO DE ACEITE	1	1	1	
19	53F-13178-00	GEAR, PUMP DRIVE ENGRANAJE TRACC.DE BOMBA	1	1	1	
20	93210-29282	O-RING ANILLO O	1	1	1	



46C1600-3040

FIG. 4 INTAKE

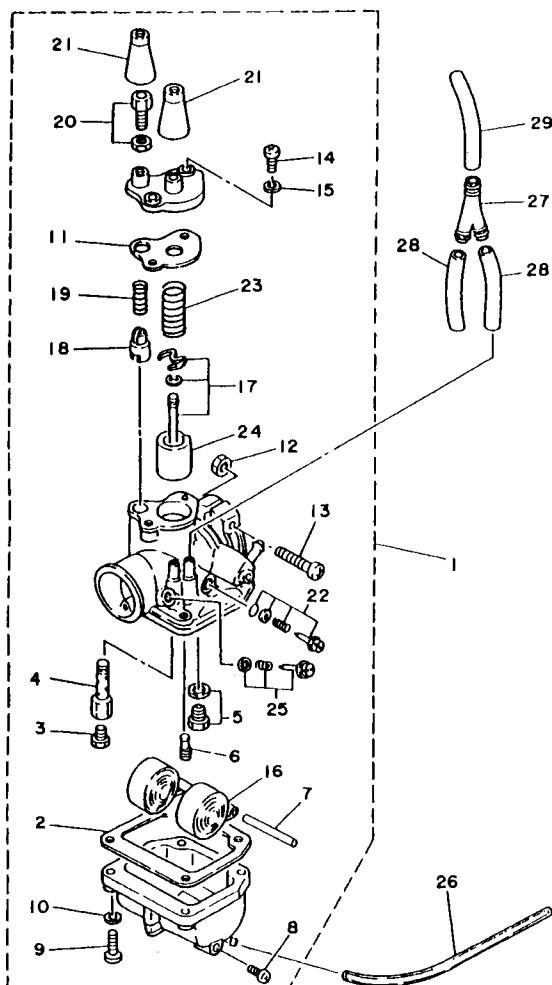
ADMISION

REF. NO.	PART NO. CODIGO NO.	DESCRIPTION DESCRIPTION	4GC6	4GC5	3NX6	REMARKS OBSERVACION
1	4GC-13610-00	REED VALVE ASSY VALVULA DE LAMINAS COMPLETA	1	1	1	
2	300-13613-03	.REED, VALVE .VALVULA DE LAMINAS	1	1	1	
3	300-13616-00	.STOPPER, REED VALVE .TOPE DE VALVULA DE LAMINAS	1	1	1	
4	98507-03008	.SCREW, PAN HEAD .TORNILLO DE CABEZA CON PLANA	3	3	3	
5	92907-03100	.WASHER -ARANDELA	3	3	3	
6	300-13505-03	JOINT, PUMP UNION DE BOMBA	1	1	1	
7	300-13622-10	GASKET, VALVE SEAT EMPAQUE DE ASIENTO VALVULA	1	1	1	
8	300-13621-10	GASKET, VALVE SEAT JUNTA, DE VALV.DE EMPAQUE	1	1	1	
9	98507-06030	SCREW, PAN HEAD TORNILLO DE CABEZA CON PLANA	4	4	4	
10	5U8-14454-00	JOINT PASADOR DE PALANCA	1	1	1	
11	18A-14411-00	CASE, AIR CLEANER 1 CAJA FILTRO DEL AIRE 1	1	1	1	
12	35X-14451-00	ELEMENT, AIR CLEANER ELEMENTO DEL FILTRO DEL AIRE	1	1	1	
13	35X-14412-00	CAP, CLEANER CASE 1 TAPA CAJA DEL FILTRO 1	1	1	1	
14	5U8-14458-00	GUIDE GUIA	1	1	1	
15	5U8-14457-00	SEAL SELLO	1	1	1	
16	1W7-14453-01	JOINT, AIR CLEANER 1 UNION DEL FILTRO DEL AIRE 1	1	1	1	
17	90460-37026	CLAMP, HOSE BRIDA, DE UNION	1	1	1	
18	97007-06045	BOLT PERNO	1	1	1	
19	92907-06100	WASHER, SPRING ARANDELA	1	1	1	
20	92907-06600	WASHER, PLATE ARANDELA	1	1	1	
21	97007-06040	BOLT PERNO	1	1	1	
22	92907-06100	WASHER, SPRING ARANDELA	1	1	1	
23	92907-06600	WASHER, PLATE ARANDELA	1	1	1	
24	90460-37026	CLAMP, HOSE BRIDA, DE UNION	1	1	1	
25	90387-062F5	COLLAR CASQUILLO CON VALONA	1	1	1	
26	90480-12314	GROMMET TAPON	1	1	1	
27	90201-06778	WASHER, PLATE ARANDELA PLANA	1	1	1	

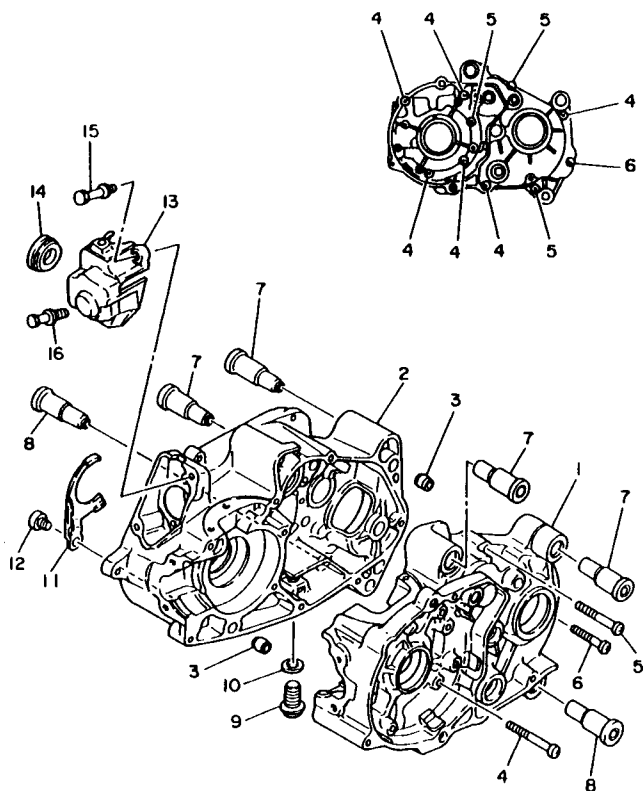
FIG. 5 CARBURETOR

CARBURADOR

REF. NO.	PART NO. CODIGO NO.	DESCRIPTION DESCRIPTION	4GC6	4GC5	3NX6	REMARKS OBSERVACION
1	59L-14101-00	CARBURETOR ASSY 1 CARBURADOR COMPLETO 1	1	1	1	
2	296-14184-01	GASKET, FLOAT CHAMBER JUNTA, CAMARA DE FLOT	1	1	1	
3	18A-14143-17	JET, MAIN (# 85) SURTIDOR, PRINCIPAL (# 85)	1	1	1	
4	45V-14141-12	NOZZLE, MAIN BOQUILLA PRINCIPAL	1	1	1	
5	21W-14107-12	NEEDLE VALVE SET VALVULA DE AGUJA	1	1	1	
6	193-14142-17	JET, PILOT (#17.5) SURTIDOR DE RALENTI (# 17.5)	1	1	1	
7	127-14186-00	PIN, FLOAT PASADOR DE LA BOYA	1	1	1	
8	12R-14191-00	PLUG, DRAIN TORNILLO, DE DRENAJE	1	1	1	
9	98501-04018	SCREW, PAN HEAD TORNILLO DE CABEZA CON PLANA	4	4	4	
10	92901-04100	WASHER, SPRING ARANDELA	4	4	4	
11	296-14198-00	GASKET EMPAQUE	1	1	1	
12	98802-05100	NUT TUERCA	1	1	1	
13	98502-05030	SCREW, PAN HEAD TORNILLO DE CABEZA CON PLANA	1	1	1	
14	98501-04010	SCREW, PAN HEAD TORNILLO DE CABEZA CON PLANA	2	2	2	
15	92901-04100	WASHER, SPRING ARANDELA	2	2	2	
16	2E9-14185-00	FLOAT BOYA	1	1	1	
17	59L-1490J-00	NEEDLE SET CJTO. AGUJA	1	1	1	
18	127-14171-00	PLUNGER, STARTER EMBOLO DE ARRANQUE	1	1	1	
19	127-14135-00	SPRING, PLUNGER RESORTE EMBOLO	1	1	1	
20	18A-14106-00	CABLE ADJUST SCREW SET TORNILLO AJUSTADOR DE CABLE	1	1	1	
21	307-14169-10	CAP FUNDA	2	2	2	
22	18A-14103-00	THROTTLE SCREW SET CJTO. TORNILLO DEL RALENTI	1	1	1	
23	296-14131-00	SPRING, THROTTLE VALVE RESORTE VALVULA DE ACELERACION	1	1	1	
24	45V-14112-25	VALVE, THROTTLE 1 VALVULA DE ACELERACION 1	1	1	1	
25	59L-14104-00	AIR SCREW SET CJTO. TORNILLO DE AIRE	1	1	1	
26	90445-05390	HOSE TUBO	1	1	1	
27	90413-05015	WAY 3 UNION	1	1	1	



59L261-5050



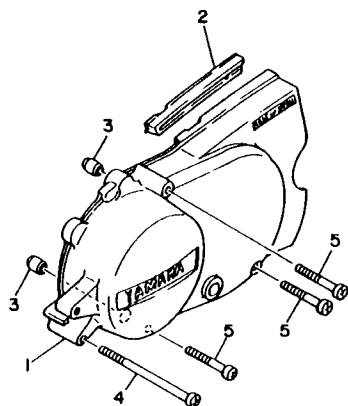
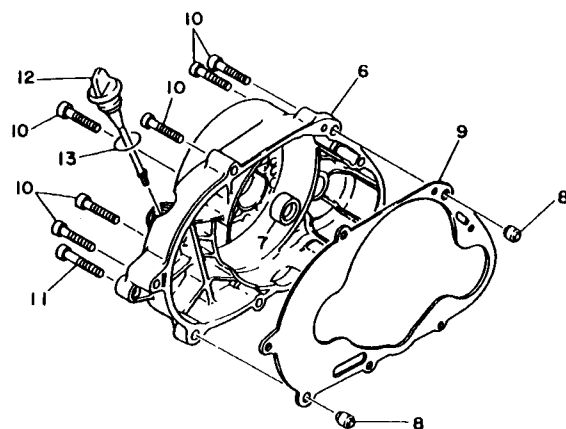
3A8010-8070

FIG. 7 CRANKCASE

CARTER

REF. NO.	PART NO. CODIGO NO.	DESCRIPTION DESCRIPTION	4GC6	4GC5	3NX6	REMARKS OBSERVACION
1	1W7-15111-03	CRANKCASE 1 CARTER MANIVELA 1	1	1	1	
2	1W7-15121-03	CRANKCASE 2 CARTER MANIVELA 2	1	1	1	
3	99530-12016	PIN, DOWEL PASADOR, DE ESPIGA	2	2	2	
4	98507-06050	SCREW, PAN HEAD TORNILLO DE CABEZA CON PLANA	6	6	6	
5	98507-06045	SCREW, PAN HEAD TORNILLO DE CABEZA CON PLANA	3	3	3	
6	98507-06035	SCREW, PAN HEAD TORNILLO DE CABEZA CON PLANA	1	1	1	
7	5T9-15316-01	DAMPER, ENGINE MOUNT 1 AMORT. MONTANTE MOTOR 1	4	4	4	
8	5U8-15316-01	DAMPER, ENGINE MOUNT 1 AMORT. MONTANTE MOTOR 1	2	2	2	
9	90340-12005	PLUG, STRAIGHT SCREW TORNILLO, DE DRENAJE	1	1	1	
10	90430-12227	GASKET JUNTA	1	1	1	
11	300-15128-00	HOLDER SOPORTE	1	1	1	
12	98507-08010	SCREW, PAN HEAD TORNILLO DE CABEZA CON PLANA	1	1	1	
13	517-15416-01	COVER, OIL PUMP CUBIERTA DE BOMBA DE ACEITE	1	1		
	3NX-E5416-00	COVER, OIL PUMP CUBIERTA DE BOMBA DE ACEITE			1	
14	90480-21038	GROMMET TAPON	1	1	1	
15	90149-06157	SCREW TORNILLO DE REGLAJE	1	1	1	
16	90101-06394	BOLT TORNILLO	1	1	1	

B10



3T5700-5080

FIG. 8 CRANKCASE COVER 1

CUBIERTA DE CARTER 1

REF. NO.	PART NO. CODIGO NO.	DESCRIPTION DESCRIPTION	4GCS	4GC5	3NX6	REMARKS OBSERVACION
1	2N8-15411-00	COVER, CRANKCASE 1 CUBIERTA DE CARTER 1	1	1	1	
2	1W7-15492-00	COVER CUBIERTA	1	1		
	3NX-E5492-00	COVER CUBIERTA			1	
3	99530-10114	PIN, DOWEL PASADOR, DE ESPIGA	2	2	2	
4	98507-06100	SCREW, PAN HEAD TORNILLO DE CABEZA CON PLANA	1	1	1	
5	98507-06045	SCREW, PAN HEAD TORNILLO DE CABEZA CON PLANA	3	3	3	
6	517-15421-01	COVER, CRANKCASE 2 TAPA DE CARTER DERECHA	1	1	1	
7	93104-11053	OIL SEAL SELLO ACEITE	1	1	1	
8	99530-10114	PIN, DOWEL PASADOR, DE ESPIGA	2	2	2	
9	4AW-15451-00	GASKET, CRANKCASE COVER 1 EMPAQ. DE CUBIERTA DE CARTER	1	1	1	
10	98507-06035	SCREW, PAN HEAD TORNILLO DE CABEZA CON PLANA	6	6	6	
11	98507-06040	SCREW, PAN HEAD TORNILLO DE CABEZA CON PLANA	1	1	1	
12	517-15362-02	PLUG, OIL LEVEL TAPON DEL NIVEL DE ACEITE	1	1	1	
13	93210-19123	O-RING ANILLO O	1	1	1	

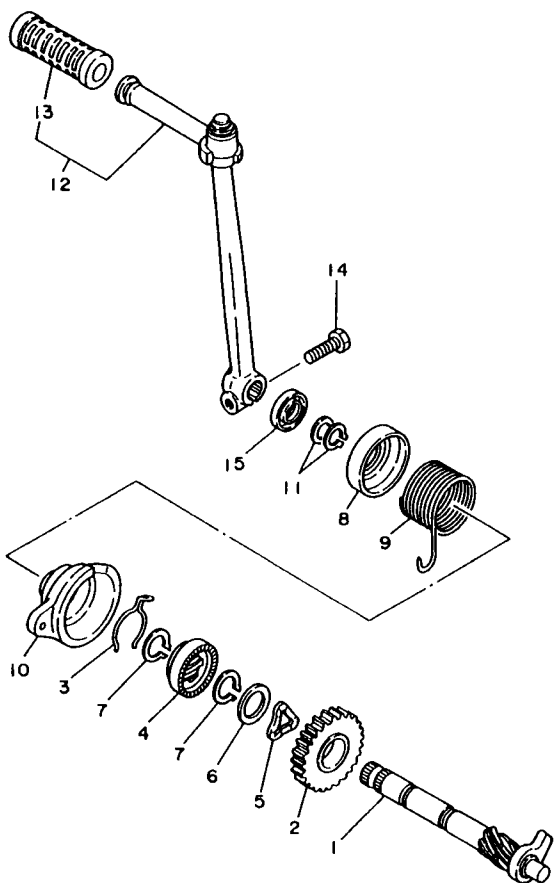


FIG. 9 STARTER

ARRANQUE

REF. NO.	PART NO. CODIGO NO.	DESCRIPTION DESCRIPTION	4GC6	4GC5	3NX6	REMARKS OBSERVACION
1	517-15660-01	KICK AXLE ASSY EJE DEL PEDAL DE ARRAN.COMPLET	1	1	1	
2	3K7-15641-00	GEAR, KICK (21T) NEGRANAJE PEDAL ARRONQUE (21T)	1	1	1	
3	90468-26046	CLIP PRESILLA	1	1	1	
4	296-15671-00	WHEEL, RATCHET RUEDA DE TRINQUETE	1	1	1	
5	90206-19027	WASHER, WAVE ARANDELA ONDULADA	1	1	1	
6	296-15644-00	SHIM CUNA	1	1	1	
7	99009-19400	CIRCLIP PRESILLA REDONDA	2	2	2	
8	1W7-15676-00	COVER, SPRING CUBIERTA DE RESORTE	1	1	1	
9	90508-26136	SPRING, TORSION RESORTE DE TORSION	1	1	1	
10	1W7-15664-01	GUIDE, SPRING GUIA DE RESORTE	1	1	1	
11	99009-15400	CIRCLIP PRESILLA REDONDA	2	2	2	
12	5T9-15620-00 3NX-E5620-00	KICK CRANK ASSY MANIVELA DE PEDAL COMPLETA KICK CRANK ASSY MANIVELA DE PEDAL COMPLETA	1	1	1	
13	156-15618-01 3NX-E5618-00	COVER, KICK LEVER GOMA PROTECTORA, PEDAL COVER, KICK LEVER GOMA PROTECTORA, PEDAL	1	1	1	
14	97017-06025	BOLT PERNO	1	1	1	
15	93109-15001	OIL SEAL SELLO ACEITE	1	1	1	



59L261-5090

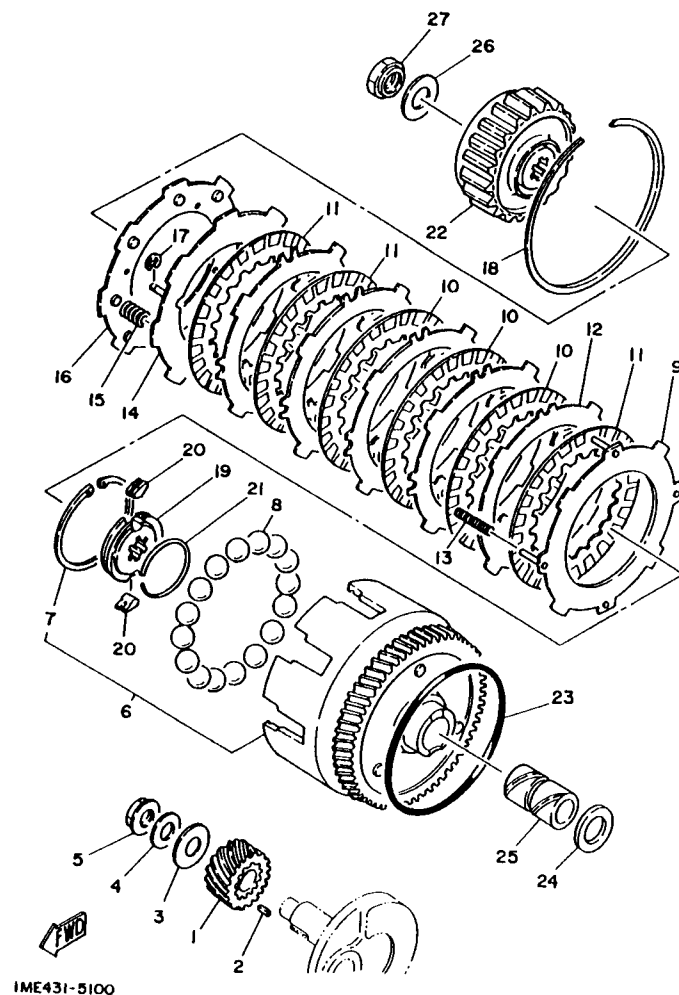


FIG. 10 CLUTCH

EMBRAGUE

REF. NO.	PART NO. CODIGO NO.	DESCRIPTION DESCRIPTION	4GC6	4GC5	3NX6	REMARKS OBSERVACION
1	56H-16110-00-30	PRIMARY DRIVE GEAR ASSY ENGRANAJE TRACCION PRIM.COMPL.	1	1	1	
2	90282-04064	KEY, STRAIGHT CHAVETA, RECTA	1	1	1	
3	90209-12280	WASHER ARANDELA DE SEPARACION	1	1	1	
4	90208-12015	WASHER, CONICAL SPRING ARANDELA DE RESORTE CONICO	1	1	1	
5	90179-12659	NUT TUERCA	1	1	1	
6	3E5-16150-02	PRIMARY DRIVEN GEAR COMP. CAMPANA DE EMBRAGUE	1	1	1	
7	90468-16090	.CLIP .PRESILLA	1	1	1	
8	93505-08030	BALL BOLA	16	16	16	
9	527-16520-10	PLATE, THRUST WEIGHT PLACA DE CONTRAPESO DE EMPUJE	1	1	1	
10	3E5-16521-00	PLATE, FRICTION PLACA DE FRICCION	3	3	3	
11	3E5-16521-00	PLATE, FRICTION PLACA DE FRICCION	3	3	3	
12	517-16524-10	PLATE, CLUTCH 1 (1.2T) PLACA DE EMBRAGUE 1 (1.2T)	5	5	5	UR
	517-16524-20	PLATE, CLUTCH 1 (1.4T) PLACA DE EMBRAGUE 1(1.4T)	5	5	5	UR
	517-16524-30	PLATE, CLUTCH 1 (1.6T) PLACA DE EMBRAGUE 1 (1.6T)	5	5	5	UR
13	90501-10602	SPRING, COMPRESSION RESORTE DE COMPRESION	4	4	4	PINK
14	517-16550-10	PRESSURE PLATE ASSY PLACA DE PRESION COMPL.	1	1	1	
15	90501-12088	SPRING, COMPRESSION RESORTE DE COMPRESION	8	8	8	
16	517-16561-01	PLATE, PRESSURE 2 PLACA DE PRESION 2	1	1	1	
17	99001-03600	CIRCLIP PRESILLA REDONDA	2	2	2	
18	93451-08094	CIRCLIP BOLA	1	1	1	
19	517-16180-00	ONE WAY BOSS COMP. COPA DE UNA VIA COMPLETA	1	1	1	
20	384-15635-00	PAWL, KICK SUJETADOR PEDAL DE ARRANQUE	2	2	2	
21	2T4-15637-01	SPRING, PAWL RESORTE DE SUJETADOR	1	1	1	
22	527-16571-01	BOSS, CLUTCH COPA DE EMBRAGUE	1	1	1	
23	93210-98202	O-RING ANILLO O	1	1	1	
24	122-16164-00	PLATE, THRUST 2 PLACA DE EMPUJE 2	1	1	1	
25	90560-17146	SPACER SEPARADOR	1	1	1	

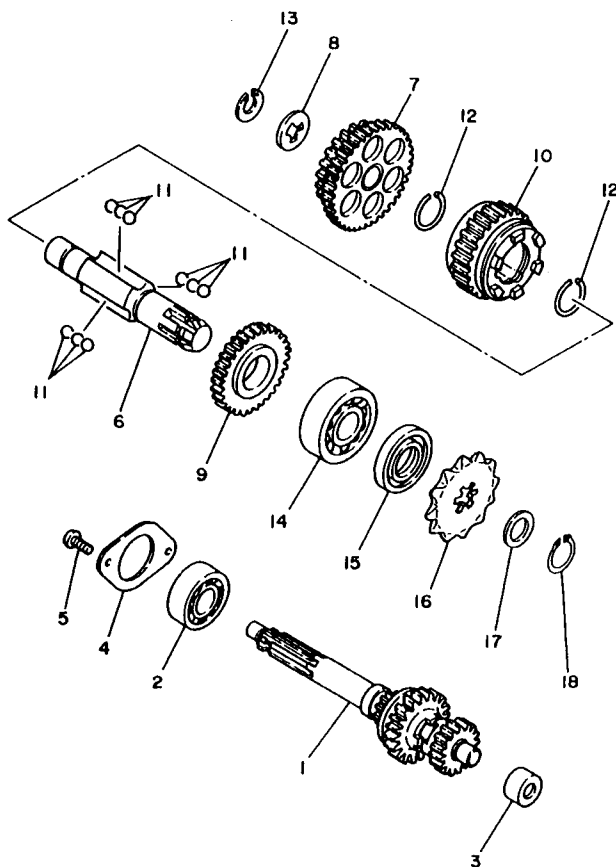


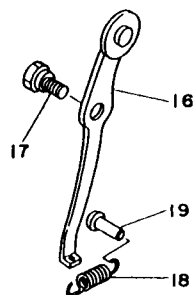
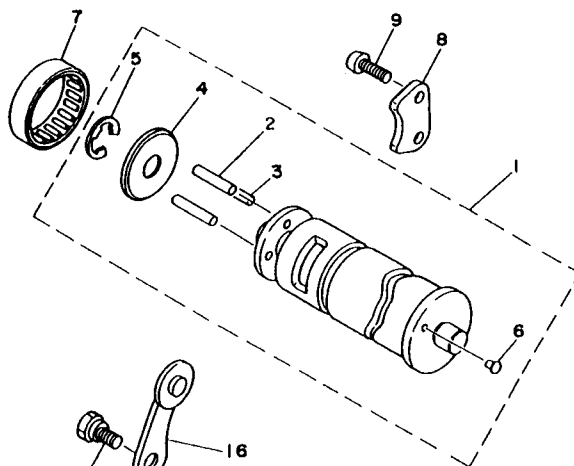
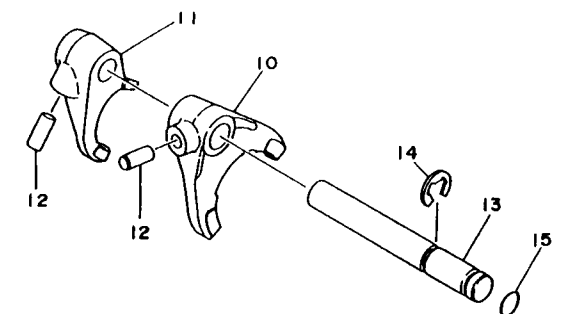
FIG. 11 TRANSMISSION

TRANSMISION

REF. NO.	PART NO. CODIGO NO.	DESCRIPTION DESCRIPTION	4GC6	4GC5	3N26		REMARKS OBSERVACION
1	1W7-17410-00	MAIN AXLE COMP. (12/16/20T) EJE PRINCIPAL COMPLETO (12/16/	1	1	1		
2	93306-20301	BEARING COJINETE	1	1	1		
3	93320-41202	BEARING (BK1212V1) COJINETE (BK1212V1)	1	1	1		
4	296-17471-00	PLATE, COVER PLACA, DE CUBIERTA	1	1	1		
5	98507-06012	SCREW, PAN HEAD TORNILLO DE CABEZA CON PLANA	2	2	2		
6	1W7-17421-10	AXLE, DRIVE EJE SECUNDARIO	1	1	1		
7	1W7-17211-12	GEAR, 1ST WHEEL (39T/26T) ENGRANAJE RUEDA DE 1RA (39T/26	1	1	1		
8	90209-15178	WASHER (0.6T) ARANDELA DE SEPARACION (0.6T)	1	1	1		UR
	90209-15179	WASHER (0.8T) ARANDELA DESEPARACION (0.8T)	1	1	1		UR
	90209-15180	WASHER (1.0T) ARANDELA DE SEPARACION (1.0T)	1	1	1		UR
9	1W7-17221-20	GEAR, 2ND WHEEL (29T) ENGRANAJE RUEDA DE 2DA (29T)	1	1	1		
10	1W7-17231-30	GEAR, 3RD WHEEL (24T) ENGRANAJE RUEDA DE 3RA(24T)	1	1	1		
11	93509-32012	BALL BOLA	9	9	9		
12	93450-28049	CIRCLIP BOLA	2	2	2		
13	93440-15012	CIRCLIP BOLA	1	1	1		
14	93306-20401	BEARING (B6204) COJINETE (B6204)	1	1	1		
15	93102-20143	OIL SEAL SELLO ACEITE	1	1	1		
16	93812-13022	SPROCKET, DRIVE (13T) RUEDA DENTADA(13T)	1	1	1		
17	90201-20266	WASHER, PLATE (1.0T) ARANDELA, PLACA(1.0T)	1	1	1		UR
	90201-20685	WASHER, PLATE (0.5T) ARANDELA PLANA (0.5T)	1	1	1		UR
18	93410-20038	CIRCLIP BOLA	1	1	1		



40U460-4111

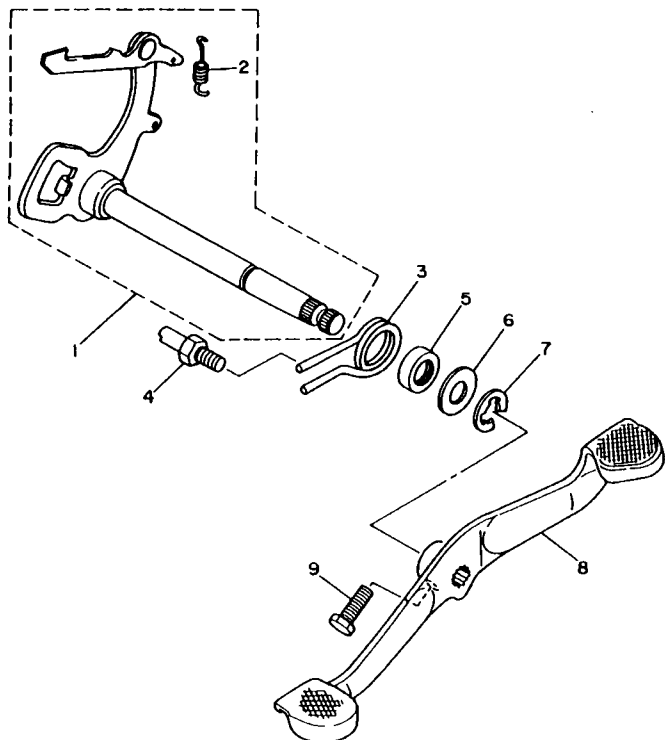


4GC3200-6120

FIG. 12 SHIFT CAM. FORK

LEVA DE CAMBIO. HORQ

REF. NO.	PART NO. CODIGO NO.	DESCRIPTION DESCRIPTION	4GC6	4GC5	3NX6	REMARKS OBSERVACION
1	2N8-18540-00	SHIFT CAM ASSY LEVADEL CAMBIO COMPLETA	1	1	1	
2	93604-22050	.PIN, DOWEL .PASADOR DE CLAVIJA	3	3	3	
3	91609-40016	.PIN, SPRING .PASADOR DE RESORTE	1	1	1	
4	296-18561-00	.PLATE, SIDE 1 .PLACA LATERAL 1	1	1	1	
5	99002-09600	.CIRCLIP .PRESILLA REDONDA	1	1	1	
6	136-18542-00	.POINT, NEUTRAL .PUNTO MVERTO	1	1	1	
7	93315-23208	BEARING COJINETE	1	1	1	
8	296-18562-01	PLATE, STOPPER 2 PLACA DE TOPE 2	1	1	1	
9	90150-06032	SCREW, ROUND HEAD TORNILLO CABEZA REDONDA	2	2	2	
10	1W7-18511-01	FORK, SHIFT 1 HORQUILLA DEL CAMBIO 1	1	1	1	
11	1W7-18512-02	FORK, SHIFT 2 HORQUILLA DEL CAMBIO 2	1	1	1	
12	93606-14081	PIN, DOWEL PASADOR DE CLAVIJA	2	2	2	
13	2N8-18531-00	BAR, SHIFT FORK GUIDE 1 BARRA GUIA HORQ. CAMBIO 1	1	1	1	
14	99001-10600	CIRCLIP PRESILLA REDONDA	1	1	1	
15	93210-09729	O-RING ANILLO O	1	1	1	
16	296-18140-02	STOPPER LEVER ASSY PALANCA DE TOPE COMPLETA	1	1	1	
17	90109-063F6	BOLT PERNO	1	1	1	
18	90506-10184	SPRING, TENSION RESORTE DE TENSION	1	1	1	
19	132-16346-00	HOOK, SPRING GANCHO DE RESORTE	1	1	1	

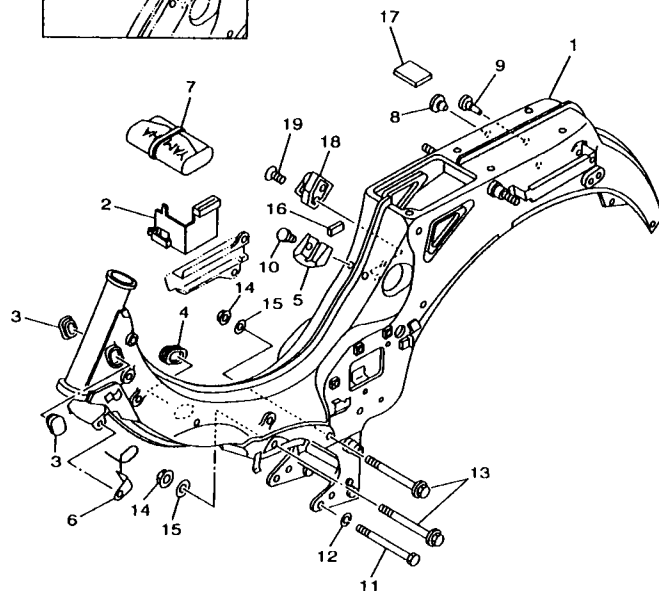
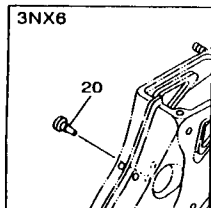


59L261-5130

FIG. 13 SHIFT SHAFT

EJE DE CAMBIO. PEDAL

REF. NO.	PART NO. CODIGO NO.	DESCRIPTION DESCRIPTION	4GC6	4GC5	3NX6	REMARKS OBSERVACION
1	58H-18101-04	SHIFT SHAFT ASSY EJE SELECTOR COMPLETO	1	1	1	GREEN
2	90506-08122	.SPRING, TENSION .RESORTE DE TENSION	1	1	1	
3	90508-320A6	SPRING, TORSION RESORTE DE TORSION	1	1	1	
4	278-18127-01	STOPPER, SCREW PASADOR DE PALANCA	1	1	1	
5	93101-12004	OIL SEAL SELLO ACEITE	1	1	1	
6	90201-12575	WASHER, PLATE ARANDELA PLANA	1	1	1	
7	99001-10600	CIRCLIP PRESILLA REDONDA	1	1	1	
8	18A-18111-00	PEDAL, SHIFT PEDAL DEL CAMBIO	1	1		
	3NX-E8111-00	PEDAL, SHIFT PEDAL DEL CAMBIO			1	
9	97027-06020	BOLT PERNO	1	1	1	

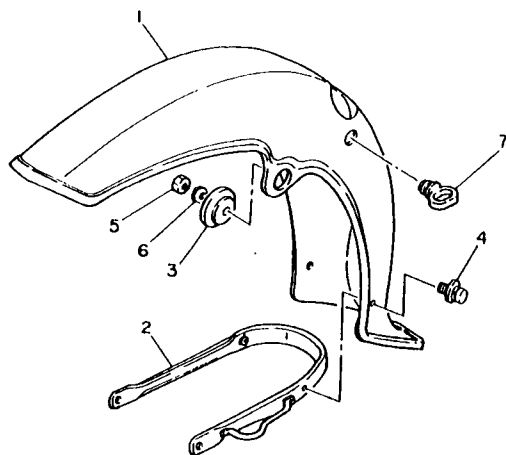


4GC5200-8140

FIG. 14 FRAME

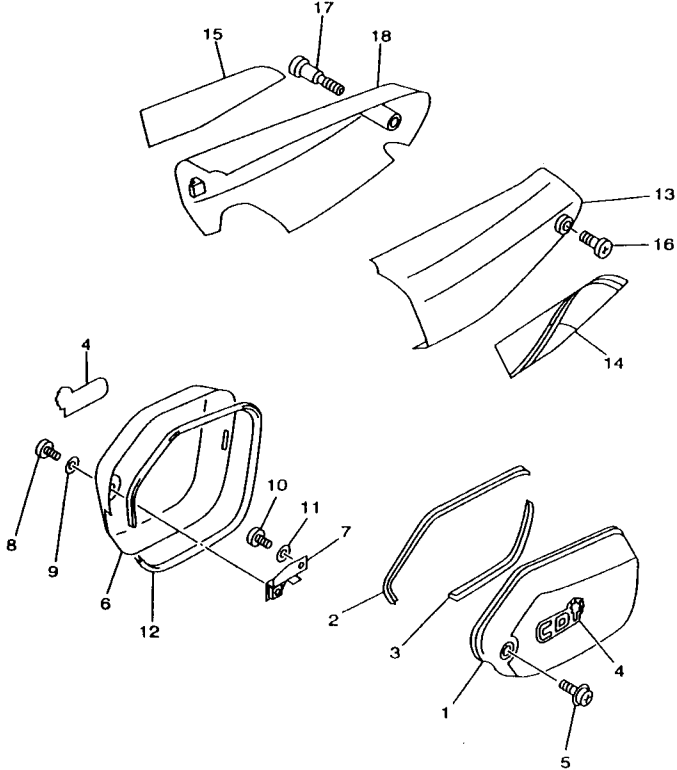
CUADRO

REF. NO.	PART NO. CODIGO NO.	DESCRIPTION DESCRIPTION	4GC6	4GC5	3NX6	REMARKS OBSERVACION
1	4GC-21110-00-P3	FRAME COMP. ARMAZON COMPLETO	1	1	1	DRC2
	4GC-21110-00-H9	FRAME COMP. ARMAZON COMPLETO	1	1	1	BG
	4GC-21110-00-P4	FRAME COMP. ARMAZON COMPLETO	1	1	1	VDBM3
2	18A-21397-00	GUIDE, WIRE HARNESS GUIA ARNES DE CABLES	1	1	1	
3	4GL-21268-00	SEAL SELLO	2	2	2	
4	296-26288-01	GROMMET, CABLE ANILLO PROTECTOR DE CABLE	1	1		
	3NX-F6288-00	GROMMET, CABLE ANILLO PROTECTOR DE CABLE			1	
5	296-21345-00	BRACKET, FUEL TANK SOPORTE ACCESORIO DE DEPOSITO	1	1	1	
6	3AC-21288-00	GUIDE, CABLE GUIA DE CABLE	1	1	1	
7	4VL-28100-00	TOOL KIT JUEGO DE HERRAMIENTAS	1	1		
	3NX-F8100-00	TOOL KIT JUEGO DE HERRAMIENTAS			1	
8	90338-07043	PLUG TAPON	1	1	1	
9	90338-05056	PLUG TAPON	1	1	1	
10	97007-06010	BOLT PERNO	2	2	2	
11	90105-10701	BOLT, WASHER BASED TORNILLO CON ARANDELA	1	1	1	
12	92907-10100	WASHER, SPRING ARANDELA	1	1	1	
13	90105-08223	BOLT, WASHER BASED TORNILLO CON ARANDELA	2	2	2	
14	95707-08500	NUT, FLANGE TUERCA DE BRIDA	2	2	2	
15	90201-086P8	WASHER, PLATE ARANDELA PLANA	2	2	2	
16	18A-21778-00	DAMPER, LOCATING 1 AMORTIGUADOR DE MONTAJE	2	2	2	
17	4N0-24181-00	DAMPER, LOCATING 1 AMORTIGUADOR DE MONTAJE	1	1	1	
18	3E1-21308-00	HELMET HANGER ASSY PORTACASCO COMPLETO	1	1		
19	90149-06154	SCREW TORNILLO DE REGLAJE	1	1		
20	90338-05056	PLUG TAPON			1	



GUARDABARRO

REF. NO.	PART NO. CODIGO NO.	DESCRIPTION	40G06	40G05	3NX6	REMARKS OBSERVACION
1	296-21511-23-P4	FENDER, FRONT GUARDABARRO DELANTERO	1	1	1	DRC2
	296-21511-23-H9	FENDER, FRONT GUARDABARRO DELANTERO	1	1	1	BG
	296-21511-23-P5	FENDER, FRONT GUARDABARRO DELANTERO	1	1	1	VDBM3
2	1LG-21513-00	STAY, FENDER 1 SOPORTE DE GUARDABARRO	1	1	1	
3	90209-08018	WASHER ARANDELA DE SEPARACION	2	2	2	
4	90159-05026	SCREW, WITH WASHER TORNILLO CON VALONA	2	2	2	
5	95307-08700	NUT TUERCA	2	2	2	
6	92907-08400	WASHER ARANDELA	2	2	2	
7	1A8-21518-00	HOLDER, CABLE SOPORTE DE CABLE	1	1	1	
8	116-21621-00	FLAP CHARNELA	1	1	1	
9	95307-06600	NUT TUERCA	2	2	2	
10	98507-06016	SCREW, PAN HEAD TORNILLO DE CABEZA CON PLANA	2	2	2	
11	92907-06600	WASHER, PLATE ARANDELA	2	2	2	



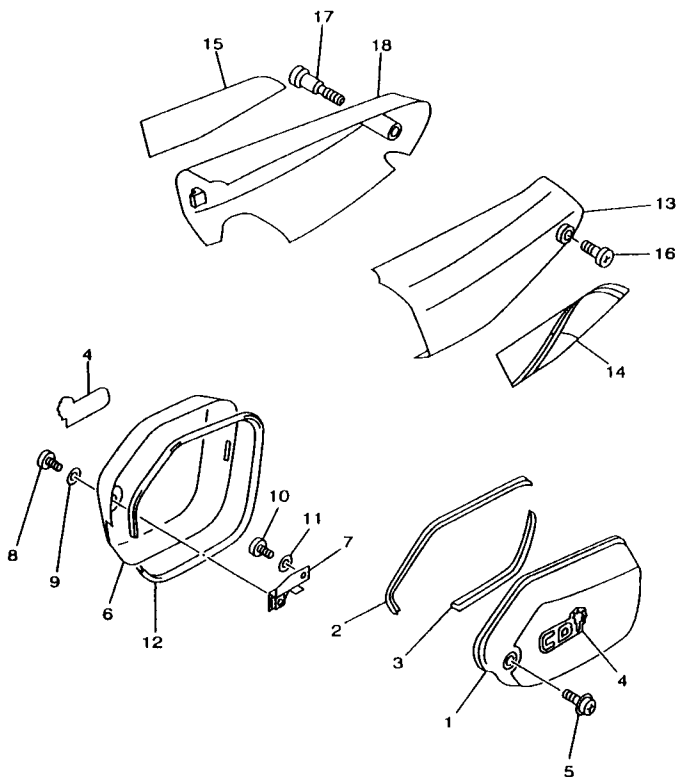

4GC5200-8160

FIG. 16 SIDE COVER CUBIERTA LATERAL

REF. NO.	PART NO. CODIGO NO.	DESCRIPTION DESCRIPTION	4GC6	4GC5	3NX6	REMARKS OBSERVACION
1	297-21711-01-P4	COVER, SIDE 1 TAPA LATERAL 1	1	1	1	DRC2
	297-21711-01-H9	COVER, SIDE 1 TAPA LATERAL 1	1	1	1	BG
	297-21711-01-P5	COVER, SIDE 1 TAPA LATERAL 1	1	1	1	VDBM3
2	3KX-2171L-00	MOLE, SIDE COVER 1 MUELLE, CUBIERTA LATERAL 1	1	1	1	
3	3KX-2171M-00	MOLE, SIDE COVER 2 MUELLE, CUBIERTA LATERAL 2	1	1	1	
4	4GC-21781-70	EMBLEM 1 EMBLEMA 1	2	2	2	
5	90159-06093	SCREW, WITH WASHER TORNILLO CON VALONA	1			
	90159-06013	SCREW, WITH WASHER TORNILLO CON VALONA		1	1	
6	3AC-21721-00-P4	COVER, SIDE 2 TAPA LATERAL 2	1	1	1	DRC2
	3AC-21721-00-H9	COVER, SIDE 2 TAPA LATERAL 2	1	1	1	BG
	3AC-21721-00-P5	COVER, SIDE 2 TAPA LATERAL 2	1	1	1	VDBM3
7	3AC-21322-00	STAY, SIDE COVER 2 SOPORTE DE TAPA LATERAL 2	1	1	1	
8	97007-06012	BOLT PERNO	1	1	1	
9	92907-06600	WASHER, PLATE ARANDELA	1	1	1	
10	98507-06012	SCREW, PAN HEAD TORNILLO DE CABEZA CON PLANA	1	1	1	
11	92907-06600	WASHER, PLATE ARANDELA	1	1	1	
12	4GL-2171M-00	MOLE, SIDE COVER 2 MUELLE, CUBIERTA LATERAL 2	1	1	1	
13	18A-21731-00-P5	COVER, SIDE 3 TAPA LATERAL 3	1	1	1	DRC2
	18A-21731-00-H9	COVER, SIDE 3 TAPA LATERAL 3	1	1	1	BG
	18A-21731-00-P6	COVER, SIDE 3 TAPA LATERAL 3	1	1	1	VDBM3
14	4GC-2173E-30	GRAPHIC 1 GRAFICO	1	1	1	UR FOR DRC2 UR PARA DRC2
	4GC-2173E-40	GRAPHIC 1 GRAFICO	1	1	1	UR FOR BG UR PARA BG
	4GC-2173E-50	GRAPHIC 1 GRAFICO	1	1	1	UR FOR VDBM3 UR PARA VDBM3
15	4GC-2173F-30	GRAPHIC 2 GRAFICO	1	1	1	UR FOR DRC2 UR PARA DRC2
	4GC-2173F-40	GRAPHIC 2 GRAFICO	1	1	1	UR FOR BG UR PARA BG
	4GC-2173F-50	GRAPHIC 2 GRAFICO	1	1	1	UR FOR VDBM3 UR PARA VDBM3
16	18A-21712-00	BOLT, SIDE COVER PERNO DE CUBIERTA LATERAL	1	1	1	

FIG. 16 SIDE COVER

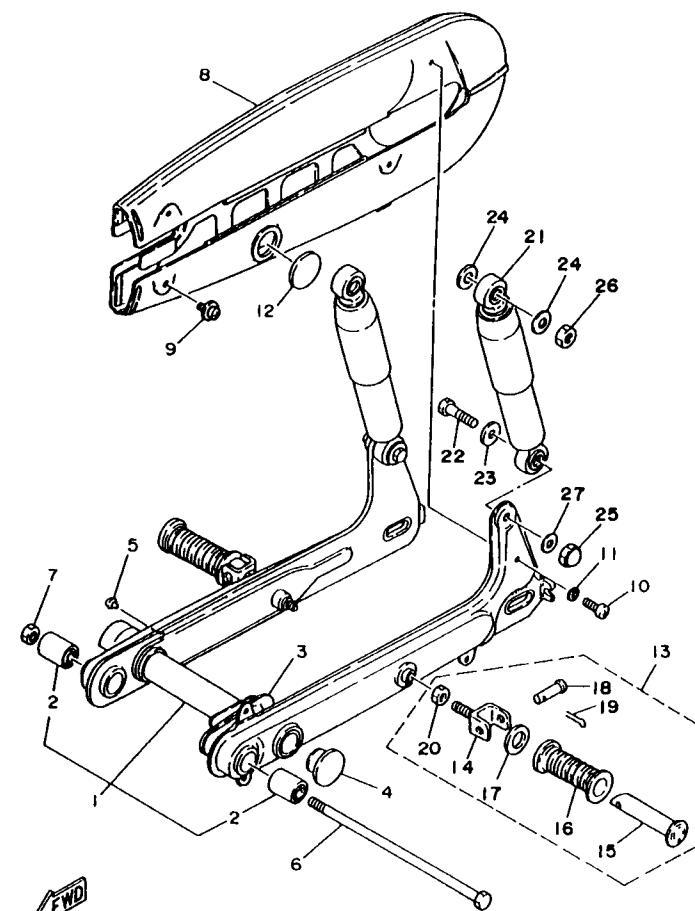
CUBIERTA LATERAL

[illegible]

4GC5200-8160

**DEPOSITO DE ACEITE**

C₈

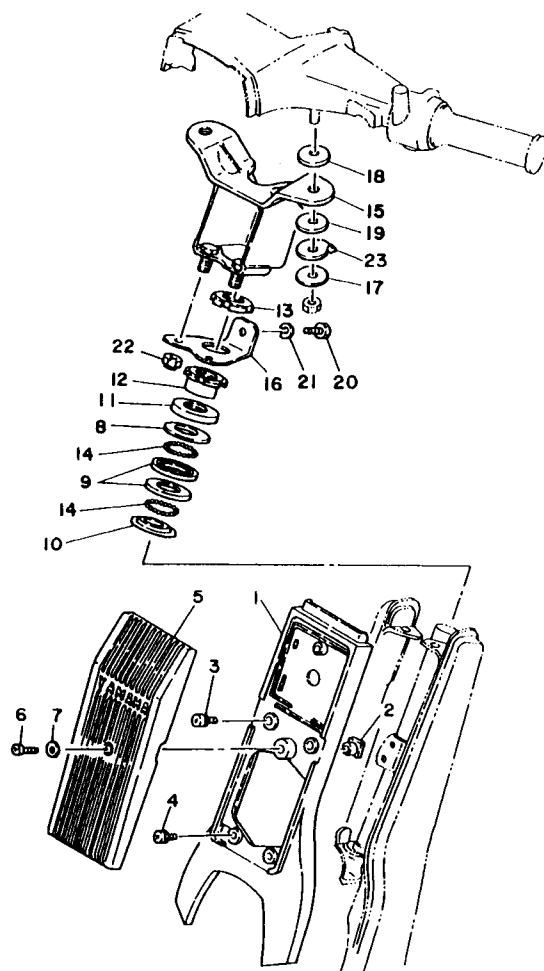


4GC3200-6180

FIG. 18 REAR ARM. SUSPENSION

BRAZO TRASERO. SUSPENSION

REF. NO.	PART NO. CODIGO NO.	DESCRIPTION DESCRIPTION	4GC6	4GC5	3NX6	REMARKS OBSERVACION
1	4GC-W2211-00-P3	REAR ARM COMP. BRAZO TRASERO COMPLETO	1	1	1	DRC2
	4GC-W2211-00-H9	REAR ARM COMP. BRAZO TRASERO COMPLETO	1	1	1	BG
	4GC-W2211-00-P4	REAR ARM COMP. BRAZO TRASERO COMPLETO	1	1	1	VDBM3
2	102-22123-00	.BUSH 1 .BUJE 1	2	2	2	
3	4GL-22151-00	SEAL, GUARD SELLO, DE GUARDA	1	1	1	
4	180-22117-00	CAP TAPA	2	2		
	3NX-F2117-00	CAP TAPA			2	
5	90338-07043	PLUG TAPON	1	1	1	
6	109-22141-01	SHAFT, PIVOT EJE DEL BARCULANTE	1	1	1	
7	90185-10091	NUT, SELF-LOCKING TUERCA AUTOBLOCANTE	1	1	1	
8	296-22310-02-P5	CHAIN CASE ASSY CAJA DE CADENA COMPLETA	1	1	1	DRC2
	296-22310-02-H9	CHAIN CASE ASSY CAJA DE CADENA COMPLETA	1	1	1	BG
	296-22310-02-P6	CHAIN CASE ASSY CAJA DE CADENA COMPLETA	1	1	1	VDBM3
9	90159-05131	SCREW, WITH WASHER TORNILLO CON VALONA	3	3	3	
10	98507-05014	SCREW, PAN HEAD TORNILLO DE CABEZA CON PLANA	1	1	1	
11	92907-05600	WASHER, PLATE ARANDELA	1	1	1	
12	148-22315-00	CAP TAPA	1	1		
	3NX-F2315-00	CAP TAPA			1	
13	120-27430-02	REAR FOOTREST ASSY 1 APOYAPIE POSTERIOR COMPLETO 1	2	2		
	59L-F7430-00	REAR FOOTREST ASSY 1 APOYAPIE POSTERIOR COMPLETO 1			2	
14	120-27432-02	.BRACKET 1 .SOPORTE 1	1	1		
	23A-F7432-00	.BRACKET 1 .SOPORTE 1			1	
15	120-27431-00	.FOOTREST, REAR 1 .APOYAPIE POSTERIOR 1	1	1	1	
16	120-27433-00	.COVER, REAR FOOTREST .CUBIERTA APOYAPIE TRASERO	1	1		
	59L-F7433-00	.COVER, REAR FOOTREST .CUBIERTA APOYAPIE TRASERO			1	
17	90201-20279	.WASHER, PLATE .ARANDELA PLANA	1	1	1	
18	90240-06052	.PIN, CLEVIS .PASADOR CON HOYO	1	1	1	



3FT656-8190

FIG. 19 STEERING

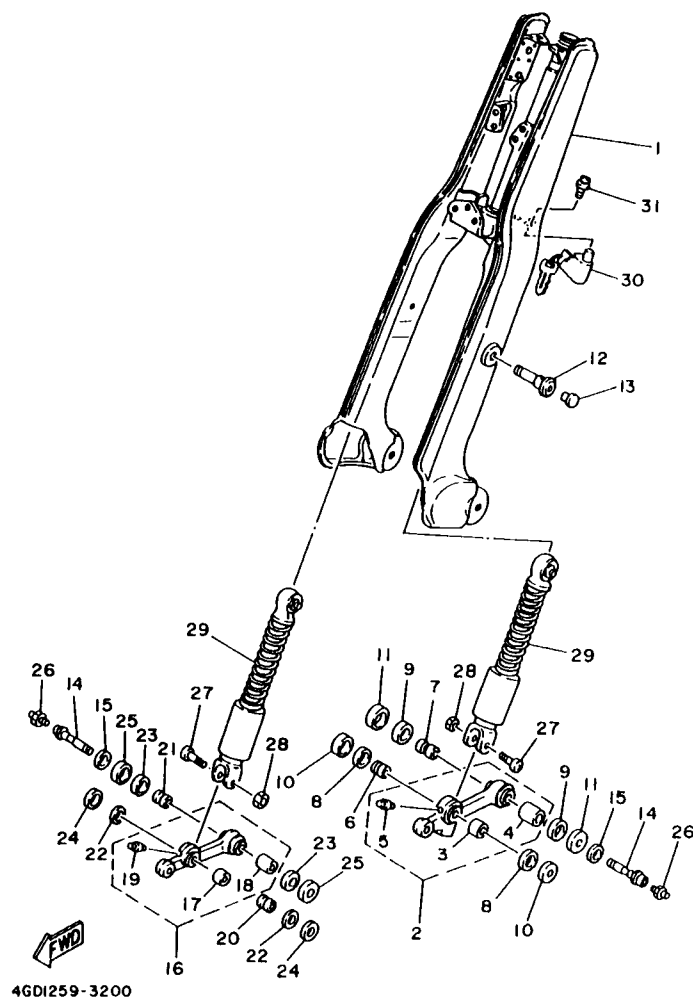
DIRECCION

REF. NO.	PART NO. CODIGO NO.	DESCRIPTION DESCRIPTION	4GC6	4GC5	3NX6	REMARKS OBSERVACION
1	18A-23391-00-P6	PANEL, FRONT PANEL DELANTERO	1	1	1	DRC2
	18A-23391-00-H9	PANEL, FRONT PANEL DELANTERO	1	1	1	BG
	18A-23391-00-P7	PANEL, FRONT PANEL DELANTERO	1	1	1	VDBM3
2	90173-06004	NUT, SQUARE TUERCA CUADRADA	1	1	1	
3	90159-06016	SCREW, WITH WASHER TORNILLO CON VALONA	2	2	2	
4	90153-06063	SCREW, HEXAGON TORNILLO HEXAGONAL	2	2	2	
5	1AJ-23397-10	PANEL, FRONT 2 PANEL DELANTERO 2	1	1	1	
6	98507-06020	SCREW, PAN HEAD TORNILLO DE CABEZA CON PLANA	1	1	1	
7	92907-06600	WASHER, PLATE ARANDELA	1	1	1	
8	22F-23411-01	RACE, BALL 1 PISTA DE BOLAS 1	1	1	1	
9	22F-23412-01	RACE, BALL 2 PISTA DE BOLAS 2	2	2	2	
10	22F-23414-01	RACE, BALL 4 BASE DE BOLA 4	1	1	1	
11	122-23416-00	COVER, BALL RACE 2 CUBIERTA DE BASE DE BOLA 2	1	1	1	
12	90179-25050	NUT TUERCA	1	1	1	
13	90179-25033	NUT TUERCA	1	1	1	
14	93503-16003	BALL BOLA	44	44	44	
15	3E1-23461-00	BRACKET, HANDLE SOPORTE DE MANUBRIO	1	1	1	
16	296-23463-01	PLATE, HANDLE PLACA DE MANUBRIO	1	1	1	
17	90201-08310	WASHER, PLATE ARANDELA PLANA	2	2	2	
18	296-23445-00	DAMPER AMORTIGUADOR	2	2		
	3NX-F3445-00	DAMPER AMORTIGUADOR			2	
19	296-23455-00	DAMPER AMORTIGUADOR	2	2		
	3NX-F3455-00	DAMPER AMORTIGUADOR			2	
20	97007-08016	BOLT PERNO	1	1	1	
21	92907-08600	WASHER, PLATE ARANDELA	1	1	1	
22	95607-08200	NUT, SELF-LOCKING TUERCA DE AUTO-CIERRE	2	2	2	
23	90215-11012	WASHER, LOCK ARANDELA DE CIERRE	2	2	2	

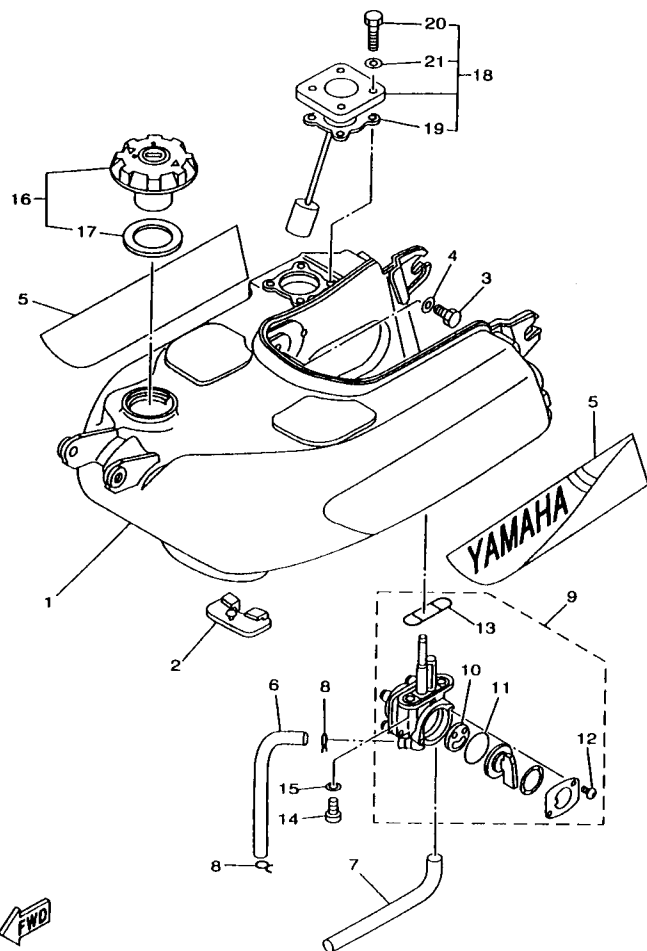
C11

FIG. 20 FRONT FORK

HORQUILLA DELANTERA



REF. NO.	PART NO. CODIGO NO.	DESCRIPTION DESCRIPTION	4GC6	4GC5	3NX6	REMARKS OBSERVACION
1	517-23310-03-P3	FORK COVER COMP. CUBIERTA DE HORQUILLA COMPLETA	1	1	1	DRC2
	517-23310-03-H9	FORK COVER COMP. CUBIERTA DE HORQUILLA COMPLETA	1	1	1	BG
	517-23310-03-P4	FORK COVER COMP. CUBIERTA DE HORQUILLA COMPLETA	1	1	1	VDBM3
2	296-23361-02	ARM 1 BRAZO 1	1	1	1	
3	296-23362-09	.BUSH 1 .BUJE 1	1	1	1	
4	296-23372-09	.BUSH 2 .BUJE 2	1	1	1	
5	93700-04002	.NIPPLE, GREASE .NIPLE DE ENGRASAR	1	1	1	
6	296-23363-01	COLLAR 1 COLLAR 1	1	1	1	
7	296-23364-02	COLLAR 2 COLLAR 4	1	1	1	
8	296-23381-01	SEAL, DUST 1 SELLO DE POLVO 1	2	2	2	
9	296-23382-01	SEAL, DUST 2 SELLO DE POLVO 2	2	2	2	
10	116-23383-00	COVER, DUST SEAL 1 CUBIERTA DE SELLO DE POLVO 1	2	2	2	
11	3AC-23384-00	COVER, DUST SEAL 2 CUBIERTA DE SELLO DE POLVO 2	2	2	2	
12	90109-08692	BOLT PERNO	2	2	2	
13	90338-06143	PLUG TAPON	2	2	2	
14	90401-10035	BOLT, UNION PERNO DE UNION	2	2	2	
15	92907-10600	WASHER, PLATE ARANDELA	2	2	2	
16	296-23371-02	ARM 2 BRAZO 2	1	1	1	
17	296-23362-09	.BUSH 1 .BUJE 1	1	1	1	
18	296-23372-09	.BUSH 2 .BUJE 2	1	1	1	
19	93700-04002	.NIPPLE, GREASE .NIPLE DE ENGRASAR	1	1	1	
20	296-23363-01	COLLAR 1 COLLAR 1	1	1	1	
21	296-23364-02	COLLAR 2 COLLAR 4	1	1	1	
22	296-23381-01	SEAL, DUST 1 SELLO DE POLVO 1	2	2	2	
23	296-23382-01	SEAL, DUST 2 SELLO DE POLVO 2	2	2	2	
24	116-23383-00	COVER, DUST SEAL 1 CUBIERTA DE SELLO DE POLVO 1	2	2	2	
25	3AC-23384-00	COVER, DUST SEAL 2 CUBIERTA DE SELLO DE POLVO 2	2	2	2	



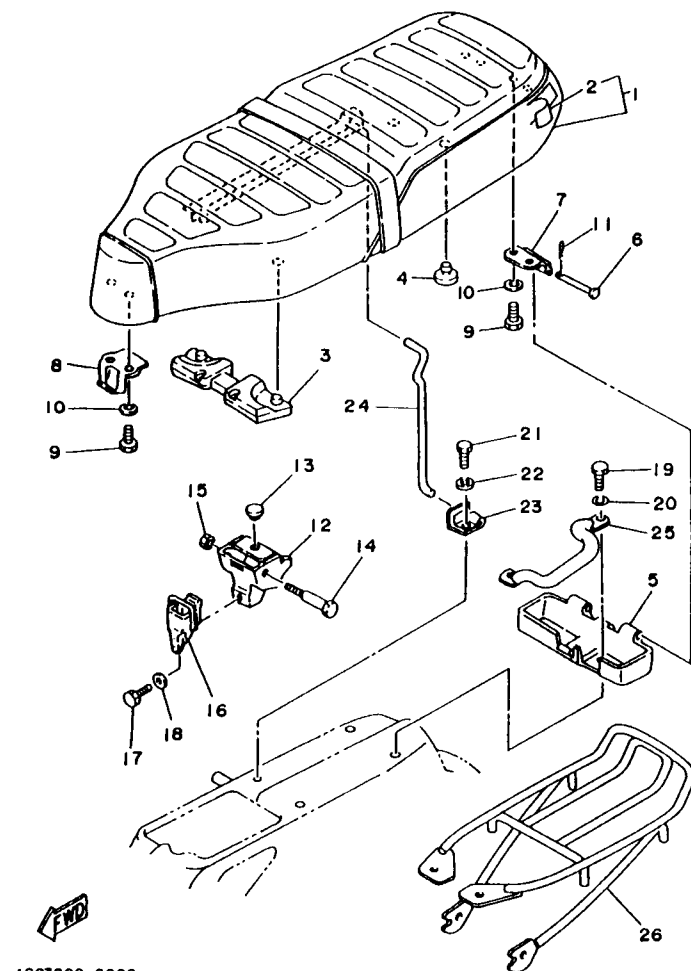
FWD
4GC5200-8210

FIG. 21 FUEL TANK

DEPOSITO DE COMBUSTIBLE

REF. NO.	PART NO. CODIGO NO.	DESCRIPTION DESCRIPTION	4GC6	4GC5	3NX6	REMARKS OBSERVACION
1	18A-24110-01-P6	FUEL TANK COMP.	1	1	1	DRC2
	18A-24110-01-H9	DEPOSITO DE COMBUSTIBLE COMP.	1	1	1	BG
	18A-24110-01-P7	FUEL TANK COMP.	1	1	1	VDBM3
2	296-24181-00	DAMPER, LOCATING 1	1	1		
	3NX-F4181-00	AMORTIGUADOR DE MONTAJE			1	
3	97007-08016	DAMPER, LOCATING 1				
		AMORTIGUADOR DE MONTAJE				
4	92907-08600	BOLT	2	2	2	
		PERNO				
5	4GC-24240-30	WASHER, PLATE	2	2	2	
		ARANDELA				
	4GC-24240-40	GRAPHIC SET	1	1	1	UR FOR DRC2
		JUEGO DE CALCOMANIAS				UR PARA DRC2
	4GC-24240-50	GRAPHIC SET	1	1	1	UR FOR BG
		JUEGO DE CALCOMANIAS				UR PARA BG
		GRAPHIC SET	1	1	1	UR FOR VDBM3
		JUEGO DE CALCOMANIAS				UR PARA VDBM3
6	90445-091K4	HOSE	1	1	1	
		TUBO				
7	18A-24317-00	PIPE 7	1	1	1	
		TUBO 7				
8	90467-08003	CLIP	2	2	2	
		PRESILLA				
9	3AC-24500-00	FUEL COCK ASSY 1	1	1	1	
		GRIFO DE COMBUSTIBLE 1				
10	3AJ-24523-00	VALVE PACKING	1	1	1	
		VALVULA				
11	3AJ-24534-00	SEAL COCK	1	1	1	
		SELLO DE GRIFO				
12	98503-03008	SCREW, PAN HEAD	2	2	2	
		TORNILLO DE CABEZA CON PLANA				
13	4X8-24512-00	O-RING	1	1	1	
		EMPAQUE				
14	90149-06011	SCREW	2	2	2	
		TORNILLO DE REGLAJE				
15	90202-05193	WASHER, PLATE	2	2	2	
		ARANDELA DE PLANA				
16	2MM-24602-02	CAP ASSY	1	1	1	
		TAPON COMPLETO				
17	2MM-24612-00	GASKET, CAP	1	1	1	
		EMPAQUE DE TAPA				
18	15K-24260-03	FUEL METER ASSY	1	1	1	
		MEDIDOR DE COMBUSTIBLE COMPL.				
19	3L5-24268-00	GASKET, FUEL METER	1	1	1	
		EMPAQ MEDIDOR DE COMBUSTIBLE				
20	97301-05016	BOLT	4	4	4	
		PERNO				
21	90201-05029	WASHER, PLATE	4	4	4	
		ARANDELA PLANA				

C14

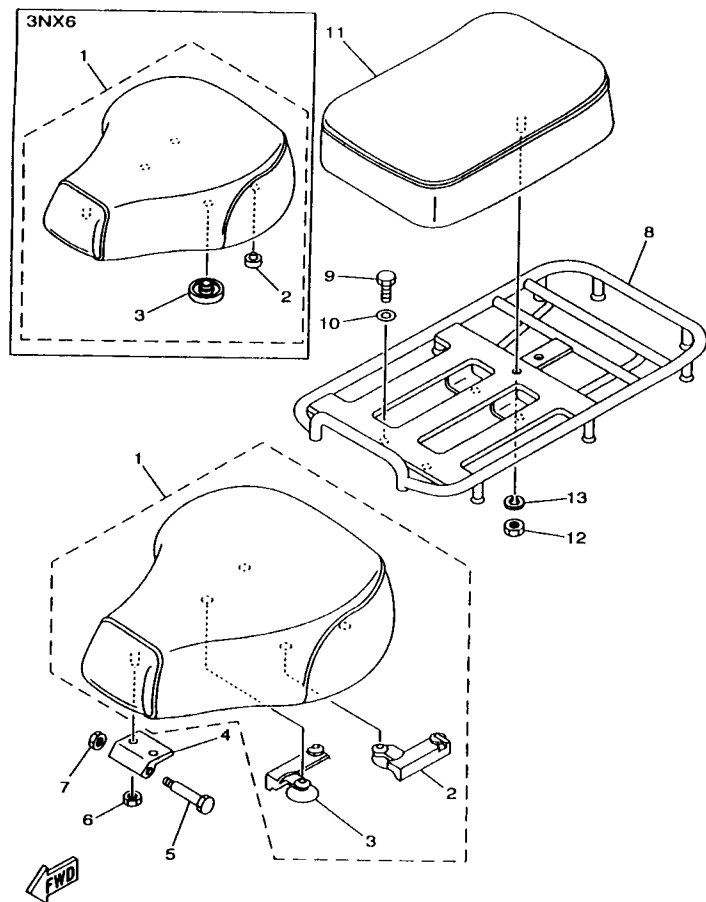


4GC3200-6220

FIG. 22 SEAT

ASIENTO

REF. NO.	PART NO. CODIGO NO.	DESCRIPTION DESCRIPTION	4GC6	4GC5	3NX6	REMARKS OBSERVACION
1	19M-W2472-00	DOUBLE SEAT ASSY ASIENTO DOBLE COMPLETO	1			
2	19M-24731-00	COVER, SEAT FUNDA DE SILLIN	1			
3	23N-24741-00	PAD, SEAT COJIN DE ASIENTO	1			
4	102-27114-A0	STOPPER, MAIN STAND TOPE DE PUNTAL PRINCIPAL	2			
5	298-24738-A0	BRACKET, SEAT SOPORTE DE ASIENTO	1			
6	91701-05055	PIN, CLEVIS PASADOR DE ABRAZADERA	2			
7	214-24726-A0	HINGE, SEAT HINGE SEAT	2			
8	298-24728-A0	BRACKET, SEAT SOPORTE DE ASIENTO	1			
9	97301-06016	BOLT PERNO	6			
10	92901-06100	WASHER, SPRING ARANDELA	6			
11	90468-10050	CLIP PRESILLA	2			
12	1W7-24718-01	BRACKET, SEAT SOPORTE DE ASIENTO	1			
13	128-27114-00	STOPPER, MAIN STAND TOPE DE PUNTAL PRINCIPAL	1			
14	90109-06024	BOLT PERNO	1			
15	95307-06600	NUT TUERCA	1			
16	214-24708-00	SEAT LEVER ASSY PALANCA ASIENTO COMPL.	1			
17	97007-06012	BOLT PERNO	1			
18	92907-06600	WASHER, PLATE ARANDELA	1			
19	97007-08020	BOLT PERNO	2			
20	92907-08600	WASHER, PLATE ARANDELA	2			
21	97007-08020	BOLT PERNO	2			
22	92907-08600	WASHER, PLATE ARANDELA	2			
23	298-24748-00	BRACKET, SEAT SOPORTE DE ASIENTO	1			
24	4GC-2478G-00	STOPPER TOPE	1			
25	527-21165-01	HANDLE, STANDING MANIJA FIJA	1			
26	296-24830-00	SUB CARRIER ASSY SUBPORTADOR COMPLETO	1			



4GC5200-8230

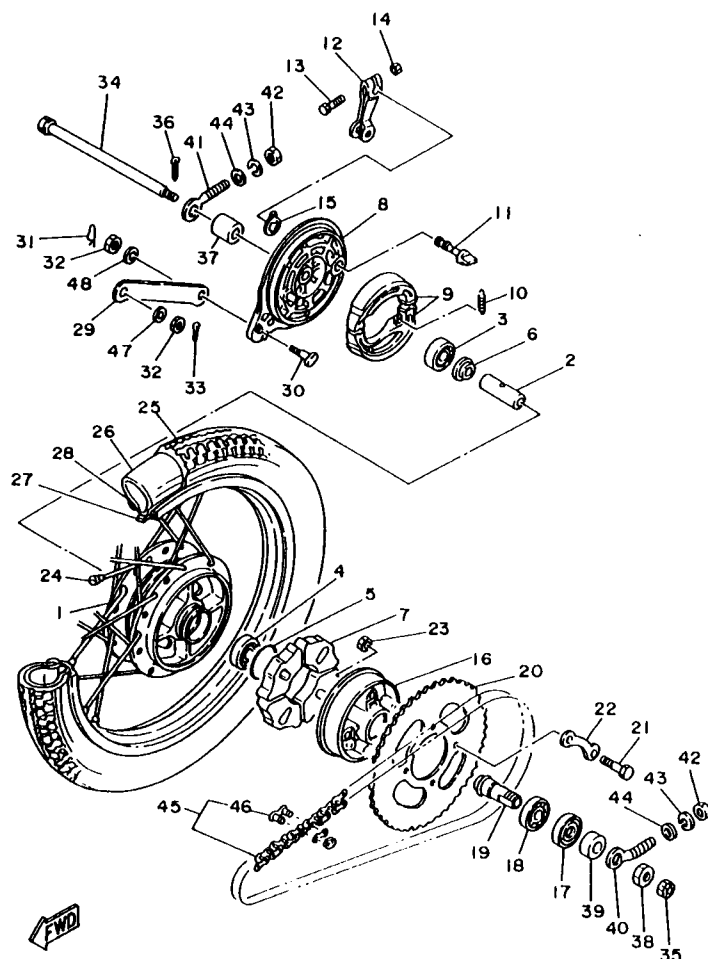
FIG. 23 SEAT 2

ASIENTO 2

REF. NO.	PART NO. CODIGO NO.	DESCRIPTION DESCRIPTION	4GC6	4GC5	3NX6	REMARKS OBSERVACION
1	3AC-24710-00	SINGLE SEAT ASSY		1		
	1JM-F4710-00	ASIENTO SIMPLE COMPLETO			1	
2	1AJ-24723-00	SINGLE SEAT ASSY		1		
	3NX-F4723-00	ASIENTO SIMPLE COMPLETO			2	
3	1AJ-24724-00	.DAMPER, SEAT		1		
	3NX-F4741-00	.AMORTIGUADOR DE ASIENTO			2	
4	296-24726-00	.DAMPER, SEAT		1	1	
	90109-06024	.AMORTIGUADOR DE ASIENTO			1	
5	95307-06600	.PAD, SEAT		2	2	
6	95307-06600	.COJIN DE ASIENTO		1	1	
7	95607-06200	HINGE, SEAT		1	1	
	95307-06600	HINGE SEAT			1	
8	1AJ-24810-00	BOLT		4	4	
	1JM-F4810-00	PERNO			1	
9	97007-08016	NUT		4	4	
	92907-08600	TUERCA			1	
10	92907-08600	NUT, SELF U-FLANGE		1	1	
	1JM-F4750-00	TUERCA DE AUTO-CIERRE			1	
11	298-24750-00	NUT		1	1	
	1JM-F4750-00	TUERCA			1	
12	95307-06600	CARRIER ASSY		1	1	
	92907-06100	PORTADOR COMPLETO			1	
13	92907-06100	CARRIER ASSY		1	1	
		PORTADOR COMPLETO			1	
		WASHER, PLATE		1	1	
		ARANDELA			1	
		TANDEM SEAT ASSY		1	1	
		ASIENTO TANDEM COMPLETO			1	
		TANDEM SEAT ASSY		1	1	
		ASIENTO TANDEM COMPLETO			1	
		NUT		1	1	
		TUERCA			1	
		WASHER, SPRING		1	1	
		ARANDELA			1	

FIG. 25 REAR WHEEL

RUEDA TRASERA



3NX3200-4250

REF. NO.	PART NO. CODIGO NO.	DESCRIPTION DESCRIPTION	4GC6	4GC5	3NX6	REMARKS OBSERVACION
1	18A-25311-00-35	HUB, REAR MASA TRASERA	1	1	1	SL
2	90560-12145	SPACER SEPARADOR	1	1	1	
3	93306-30103	BEARING (B6301Z) COJINETE	1	1	1	
4	93306-30102	BEARING (B6301) COJINETE (B6301)	1	1	1	
5	93210-41041	O-RING ANILLO Q	1	1	1	
6	102-25315-00	FLANGE, SPACER SEPARADOR	1	1	1	
7	18A-25364-00	DAMPER AMORTIGUADOR	4	4	4	
8	31J-25321-00-35	PLATE, BRAKE SHOE PLACA DE ZAPATA DE FRENO	1	1	1	SL
9	4KN-W2536-11	BRAKE SHOE SET JUEGO DE ZAPATA DE FRENO	1	1	1	
10	90506-15260	SPRING, TENSION RESORTE DE TENSION	2	2	2	
11	3Y6-25351-00	CAMSHAFT ARBOL DE LEVAS	1	1	1	
12	1T9-25355-00	LEVER, CAMSHAFT PALANCA DE ARBOL DE LEVAS	1	1	1	
13	90101-06278	BOLT TORNILLO	1	1	1	
14	95307-06600	NUT TUERCA	1	1	1	
15	3Y6-2533A-01	PLATE, INDICATOR PLACA INDICADOR	1	1	1	
16	296-25366-01	CLUTCH, HUB EMBRAGUE DE MASA	1	1	1	
17	93106-30004	OIL SEAL SELLO ACEITE	1	1		
18	93306-00438	BEARING COJINETE	1	1	1	UR
19	102-25387-03	AXLE, SPROCKET EJE DE CORONA	1	1	1	
20	122-25438-10	SPROCKET, DRIVEN (38T) CORONA (38T)	1	1		
	3NX-F5438-00	SPROCKET, DRIVEN (38T) CORONA (38T)			1	
21	90101-08672	BOLT TORNILLO	4	4	4	
22	102-25412-00	WASHER ARANDELA	2	2		
	3NX-F5412-00	WASHER ARANDELA			2	
23	90179-08639	NUT TUERCA	4	4	4	
24	18E-25304-00	SPOKE SET, REAR JUEGO DE RAYOS TRASEROS	1	1	1	
25	94125-172T3	TIRE (2.50-17) NEUMATICO (2.50-17)	1	1	1	

FIG. 25 REAR WHEEL

RUEDA TRASERA

REF. NO.	PART NO. CODIGO NO.	DESCRIPTION DESCRIPTION	4GC6	4GC5	3NX6	REMARKS OBSERVACION
26	94222-17269	TUBE (2.25-17)	1	1	1	UR INQUE
	94225-17309	TUBO (2.25-17)	1	1	1	UR INQUE
27	94322-17078	BAND, RIM (2.25-17)	1	1	1	INQUE
		BANDA DE ARO (2.25-17)				
28	94414-17003	RIM (1.40-17)	1	1	1	
		ARO (1.40-17)				
29	18A-25371-00	BAR, TENSION	1	1		
	59L-F5371-00	BARRA, TENSORA			1	
		BARRA TENSORA				
30	90109-08183	BOLT	1	1	1	
		PERNO				
31	90468-12007	CLIP	1	1	1	
		PRESILLA				
32	95307-08700	NUT	2	2	2	
		TUERCA				
33	91401-20015	PIN, COTTER	1	1	1	
		PASADOR DE CHAVETA				
34	401-25181-01	AXLE, WHEEL	1	1	1	
		EJE DE LA RUEDA				
35	90171-12005	NUT, CASTLE	1	1	1	
		TUERCA ENTALLADA				
36	91401-30025	PIN, COTTER	1	1	1	
		PASADOR DE CHAVETA				
37	90387-12412	COLLAR	1	1	1	
		CASQUILLO CON VALONA				
38	90170-18165	NUT	1	1	1	
		TUERCA				
39	90387-18143	COLLAR	1	1	1	
		CASQUILLO CON VALONA				
40	127-25388-01	PULLER, CHAIN 1	1	1	1	
		TIRADOR DE CADENA 1				
41	102-25389-00	PULLER, CHAIN 2	1	1	1	
		TIRADOR DE CADENA 2				
42	95307-06600	NUT	2	2	2	
		TUERCA				
43	92907-06100	WASHER, SPRING	2	2	2	
		ARANDELA				
44	90201-081A5	WASHER, PLATE	2	2	2	
		ARANDELA PLANA				
45	94580-52100	CHAIN (D.I.D. 420M 100L)	1	1	1	
		CADENA (D.I.D. 420M 100L)				
46	94680-52001	JOINT, CHAIN (DID 420M)	1	1	1	
		CONECTOR DE CADENA (DID 420M)				
47	92907-08200	WASHER	1	1	1	
		ARANDELA				
48	92907-08100	WASHER, SPRING	1	1	1	
		ARANDELA				

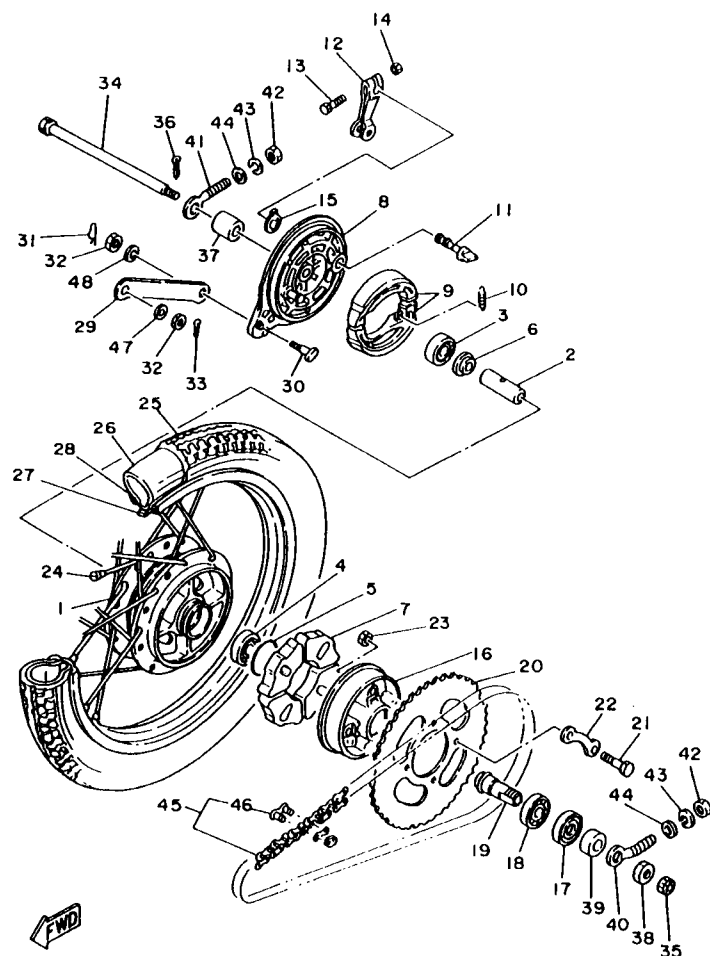


FIG. 26 STEERING HANDLE. CABLE MANUBRIO. CABLE

REF. NO.	PART NO. CODIGO NO.	DESCRIPTION DESCRIPTION	4GC6	4GC5	3NX6	REMARKS OBSERVACION
1	3E1-26210-10-98	HANDLE MANUBRIO	1	1	1	LGB
2	95307-08700	NUT TUERCA	2	2	2	
3	3E1-26215-00-33	COVER, LOWER CUBIERTA INFERIOR	1	1	1	YB
4	90159-05028	SCREW, WITH WASHER TORNILLO CON VALONA	2	2		
	90159-05022	SCREW, WITH WASHER TORNILLO CON VALONA			2	
5	3E1-26240-10	GRIP ASSY EMPUNADURA COMPLETA	1	1		
	3NX-F6240-00	GRIP ASSY EMPUNADURA COMPLETA			1	
6	116-26242-00	.GRIP (RIGHT) .EMPUNADURA (MD)	1	1		
	3NX-F6242-00	.GRIP (RIGHT) .EMPUNADURA (MD)			1	
7	116-26241-00	GRIP (LEFT) EMPUNADURA (MI)	1	1		
	3NX-F6241-00	GRIP (LEFT) EMPUNADURA (MI)			1	
8	1Y0-26290-00	REAR VIEW MIRROR ASSY (R.H) ESPEJO COMPLETO (DERECHO)	1	1		
	59L-F6280-00	REAR VIEW MIRROR ASSY (LEFT) ESPEJO COMPLETO (IZQUIERDO)			1	
9	1Y0-26290-10	REAR VIEW MIRROR ASSY (L.H) ESPEJO COMPLETO (IZQUIERDO)	1	1		
	59L-F6290-00	REAR VIEW MIRROR ASSY (RIGHT) ESPEJO COMPLETO (DERECHO)			1	
10	3E1-26311-04	CABLE, THROTTLE 1 CABLE DE ACELERADOR 1	1	1	1	
11	18A-26312-01	CABLE, THROTTLE 2 CABLE DE ACELERADOR 2	1	1	1	
12	3E1-26321-03	CABLE, PUMP CABLE DE BOMBA	1	1	1	
13	3J0-26261-00	CONNECTOR, CABLE CONECTOR DE CABLE	1	1	1	
14	3J0-26262-00	CAP, CABLE CONNECTOR TAPA DE CABLE CONECTOR	1	1	1	
15	3E1-26274-00	GUIDE, ROTOR GUIA DE ROTOR	1	1	1	
16	2T5-26273-00	ROTOR ROTOR	1	1	1	
17	3E1-26244-00	SLIDER, THROTTLE CORREDERA DE OBTURADOR	1	1	1	
18	2T5-26267-00	PIN PASADOR	1	1	1	
19	90501-06611	SPRING, COMPRESSION RESORTE DE COMPRESION	1	1	1	
20	90167-03004	SCREW, TAPPING TORNILLO DE ROSCA HEMBRA	4	4	4	
21	360-26266-00	BOOT, CYLINDER FUNDA DE CILINDRO	1	1	1	

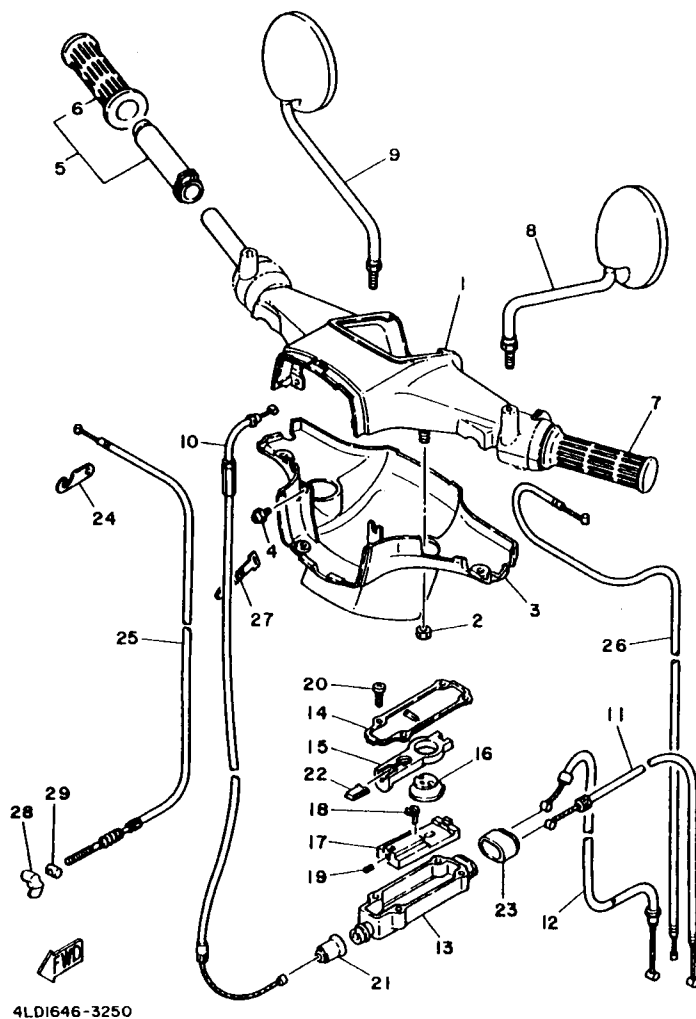
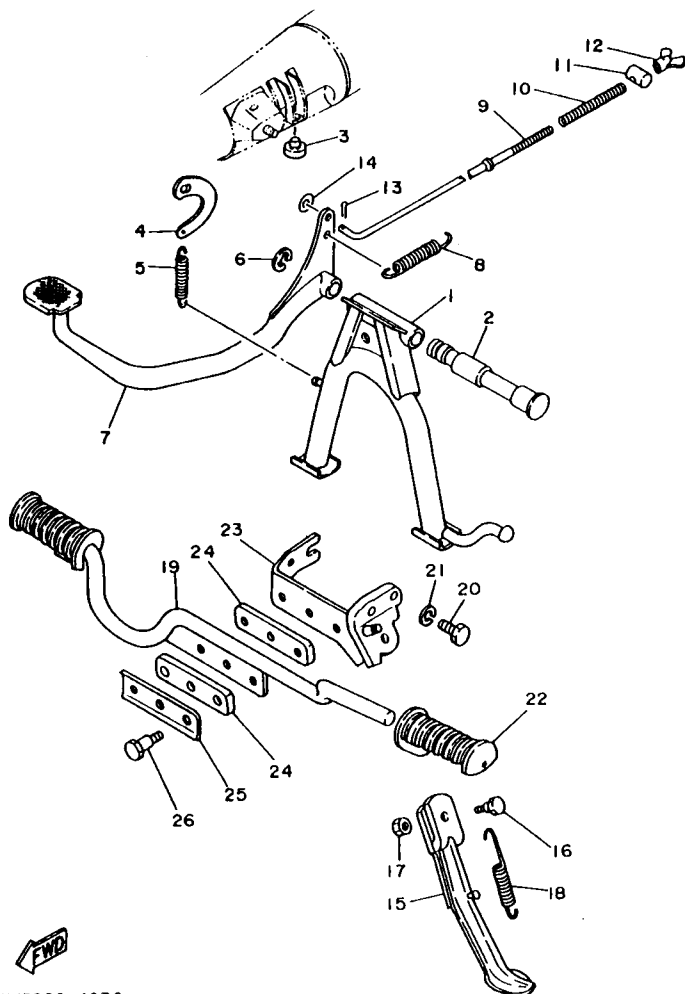


FIG. 27 STAND. FOOTREST

SOPORTE. APOYAPIE

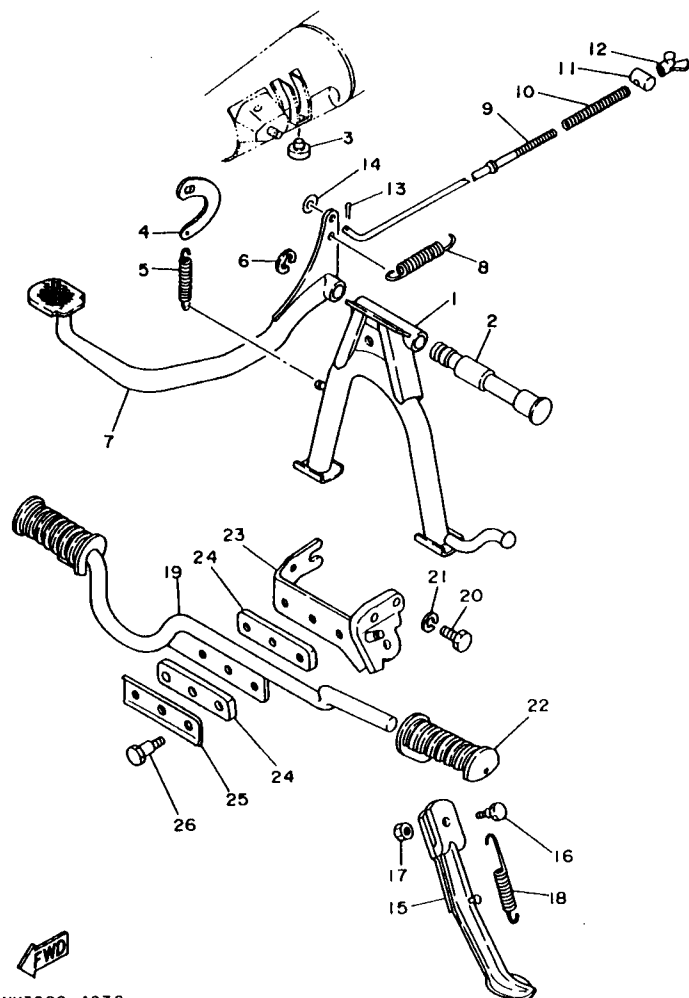
REF. NO.	PART NO. CODIGO NO.	DESCRIPTION DESCRIPTION	4G06	4G05	3NX6	REMARKS OBSERVACION
1	266-27111-10	STAND, MAIN	1	1		
	3NX-F7111-00	PUNTAL PRINCIPAL				
		STAND, MAIN			1	
		PUNTAL PRINCIPAL				
2	517-27112-01	SHAFT, MAIN STAND	1	1		
	3NX-F7112-00	EJE DE PUNTAL PRINCIPAL				
		SHAFT, MAIN STAND			1	
		EJE DE PUNTAL PRINCIPAL				
3	116-27114-00	STOPPER, MAIN STAND	1	1		
		TOPE DE PUNTAL PRINCIPAL				
	3NX-F7114-00	STOPPER, MAIN STAND			1	
		TOPE DE PUNTAL PRINCIPAL				
4	109-27115-00	LINK, MAIN STAND	1	1		
	3NX-F7115-00	CONEXION DE PUNTAL PRINCIPAL				
		LINK, MAIN STAND			1	
		CONEXION DE PUNTAL PRINCIPAL				
5	90506-29054	SPRING, TENSION	1	1	1	
		RESORTE DE TENSION				
6	93430-12008	CIRCLIP	1	1	1	
		BOLA				
7	3AB-27211-01	PEDAL, BRAKE	1	1		
		PEDAL DE FRENO				
	3NX-F7211-01	PEDAL, BRAKE			1	
		PEDAL DE FRENO				
8	90506-20041	SPRING, TENSION	1	1	1	
		RESORTE DE TENSION				
9	18A-27231-00	ROD, BRAKE	1	1		
		VARILLA DE FRENO				
	3NX-F7231-00	ROD, BRAKE			1	
		VARILLA DE FRENO				
10	90501-10245	SPRING, COMPRESSION	1	1	1	
		RESORTE DE COMPRESION				
11	90249-12008	PIN	1	1	1	
		PASADOR				
12	90179-06411	NUT	1	1		
		TUERCA				
	90175-06013	NUT, WING			1	
		TUERCA MARIPOSA				
13	91401-20012	PIN, COTTER	1	1	1	
		PASADOR DE CHAVETA				
14	92907-06600	WASHER, PLATE	1	1	1	
		ARANDELA				
15	18A-27311-10	STAND, SIDE	1	1		
		PUNTAL LATERAL				
	3NX-F7311-00	STAND, SIDE			1	
		PUNTAL LATERAL				
16	90109-08034	BOLT	1	1	1	
		PERNO				
17	95307-08700	NUT	1	1	1	
		TUERCA				
18	90506-25047	SPRING, TENSION	1	1	1	
		RESORTE DE TENSION				
19	18A-27411-01	FOOTREST 1	1	1		
		APOYAPIE 1				



3NX3200-4270

FIG. 27 STAND. FOOTREST

SOPORTE. APOYAPIE



REF. NO.	PART NO. CODIGO NO.	DESCRIPTION DESCRIPTION	4G06	4G05	3NX6	REMARKS OBSERVACION
19	3NX-F7411-00	FOOTREST 1 APOYAPIE 1			1	
20	97027-10020	BOLT PERNO	1	1	1	
21	92907-10600	WASHER, PLATE ARANDELA	1	1	1	
22	441-27413-01	COVER, FOOTREST CUBIERTA DE APOYAPIE	2	2		
	59M-F7413-00	COVER, FOOTREST CUBIERTA DE APOYAPIE			2	
23	18A-27412-00	BRACKET, FOOTREST 1 SOPORTE DE APOYAPIE 1	1	1		
	3NX-F7412-00	BRACKET, FOOTREST 1 SOPORTE DE APOYAPIE 1			1	
24	18A-27414-00	DAMPER, FOOTREST AMORTIGUADOR DE APOYAPIE	2	2		
	3NX-F7414-00	DAMPER, FOOTREST AMORTIGUADOR DE APOYAPIE			2	
25	18A-27417-00	WASHER, FOOTREST ARANDELA DE APOYAPIE	1	1		
	3NX-F7417-00	WASHER, FOOTREST ARANDELA DE APOYAPIE			1	
26	90109-08686	BOLT PERNO	3	3	3	

3NX3200-4270

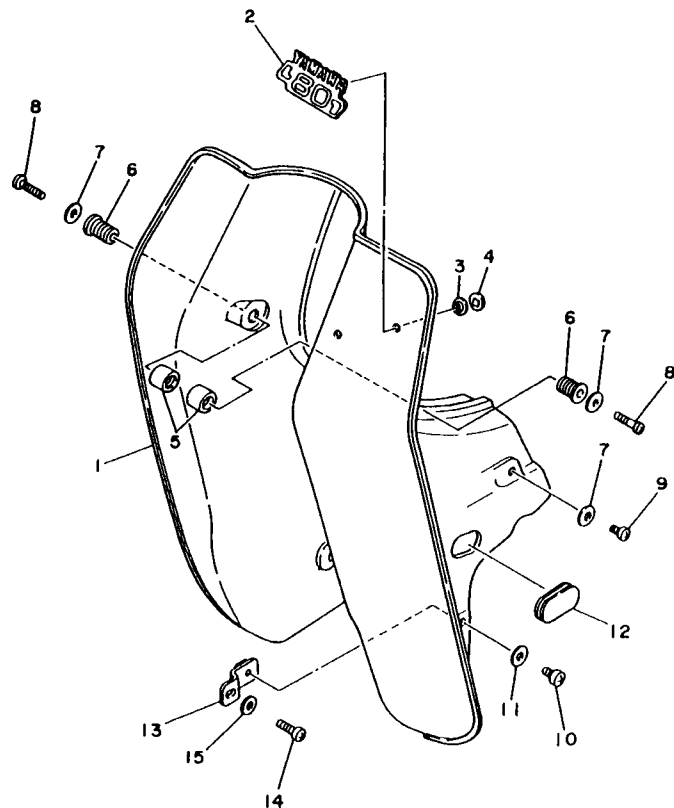


FIG. 28 LEG SHIELD

PATA PROTEGIDA

REF. NO.	PART NO. CODIGO NO.	DESCRIPTION DESCRIPTION	4GC6	4GC5	3NX6	REMARKS OBSERVACION
1	18A-28311-00	LEG SHIELD 1 PROTECCION DE PATA 1	1	1	1	
2	3E5-28315-00	EMBLEM EMBLEMA	1	1	1	
3	116-28316-01	DAMPER, EMBLEM AMORTIGUADOR EMBLEMA	2	2	2	
4	90183-04047	NUT, SPRING TUERCA DE RESORTE	2	2	2	
5	296-28373-00	COLLAR COLLAR	2	2	2	
6	296-28329-00	SPACER ESPACIADOR	2	2	2	
7	90201-06380	WASHER, PLATE ARANDELA PLANA	4	4	4	
8	98507-06040	SCREW, PAN HEAD TORNILLO DE CABEZA CON PLANA	2	2	2	
9	98507-06016	SCREW, PAN HEAD TORNILLO DE CABEZA CON PLANA	2	2	2	
10	98507-06016	SCREW, PAN HEAD TORNILLO DE CABEZA CON PLANA	2	2	2	
11	92907-06600	WASHER, PLATE ARANDELA	2	2	2	
12	296-28349-01	CAP TAPA	1	1	1	
13	18A-28322-00	STAY 2 SOPORTE 2	2	2	2	
14	98507-06016	SCREW, PAN HEAD TORNILLO DE CABEZA CON PLANA	2	2	2	
15	90201-06380	WASHER, PLATE ARANDELA PLANA	2	2	2	



4GC3200-6280

D11



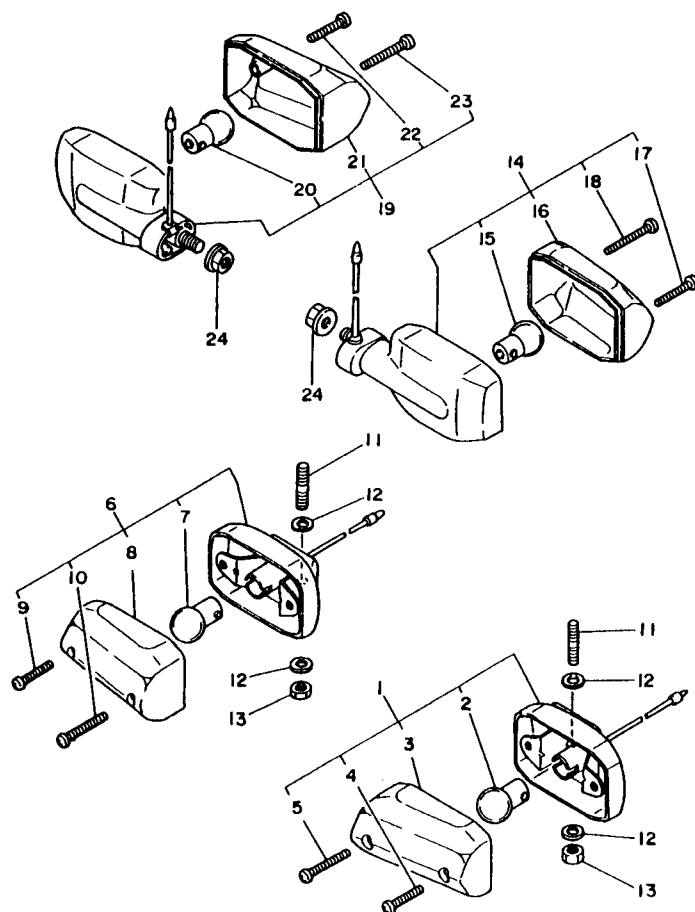
GENERADOR

D12

FIG. 30 FLASHER LIGHT

LUZ DE DESTELLADOR

REF. NO.	PART NO. CODIGO NO.	DESCRIPTION DESCRIPTION	4G08	4G05	3NX6	REMARKS OBSERVACION
1	18A-83310-10	FRONT FLASHER LIGHT ASSY 1 DESTELLADOR DE LUZ DELANT.	1	1		
	3NX-H3310-00	FRONT FLASHER LIGHT ASSY 1 DESTELLADOR DE LUZ DELANT.			1	
2	1M3-83311-10	.BULB, FLASHER .BOMBILLA DE DESTELLADOR	1	1		
	3NX-H3311-00	.BULB, FLASHER .BOMBILLA DE DESTELLADOR			1	
3	18A-83312-00	.LENS, FLASHER .LENTE DE DESTELLADOR	1	1		
	3NX-H3312-00	.LENS, FLASHER .LENTE DE DESTELLADOR			1	
4	98501-03028	.SCREW, PAN HEAD .TORNILLO DE CABEZA CON PLANA	1	1		
	98501-03030	.SCREW, PAN HEAD .TORNILLO DE CABEZA CON PLANA			1	
5	98501-03036	.SCREW, PAN HEAD .TORNILLO DE CABEZA CON PLANA	1	1		
	3NX-H3333-00	.SCREW, LENS FITTING .TORNILLO ACCESORIO DE LENTE			1	
6	18A-83320-10	FRONT FLASHER LIGHT ASSY 2 DESTELLADOR DE LUZ DELANT.	1	1		
	3NX-H3320-00	FRONT FLASHER LIGHT ASSY 2 DESTELLADOR DE LUZ DELANT.			1	
7	1M3-83311-10	.BULB, FLASHER .BOMBILLA DE DESTELLADOR	1	1		
	3NX-H3311-00	.BULB, FLASHER .BOMBILLA DE DESTELLADOR			1	
8	18A-83322-00	.LENS, FLASHER 2 .LENTE DE INTERMITENTE 2	1	1		
	3NX-H3322-00	.LENS, FLASHER 2 .LENTE DE INTERMITENTE 2			1	
9	98501-03028	.SCREW, PAN HEAD .TORNILLO DE CABEZA CON PLANA	1	1		
	98501-03030	.SCREW, PAN HEAD .TORNILLO DE CABEZA CON PLANA			1	
10	98501-03036	.SCREW, PAN HEAD .TORNILLO DE CABEZA CON PLANA	1	1		
	3NX-H3333-00	.SCREW, LENS FITTING .TORNILLO ACCESORIO DE LENTE			1	
11	90116-06282	BOLT, STUD ESPARRAGO	2	2	2	
12	92907-06200	WASHER ARANDELA	2	2	4	
13	95707-06500	NUT, FLANGE TUERCA DE BRIDA	2	2		
	95307-06700	NUT TUERCA			2	
14	18A-83330-10	REAR FLASHER LIGHT ASSY 1 DESTELLADOR DE LUZ TRAS.COMPL.	1	1		
	3NX-H3330-00	REAR FLASHER LIGHT ASSY 1 DESTELLADOR DE LUZ TRAS.COMPL.			1	
15	1M3-83311-10	.BULB, FLASHER .BOMBILLA DE DESTELLADOR	1	1		

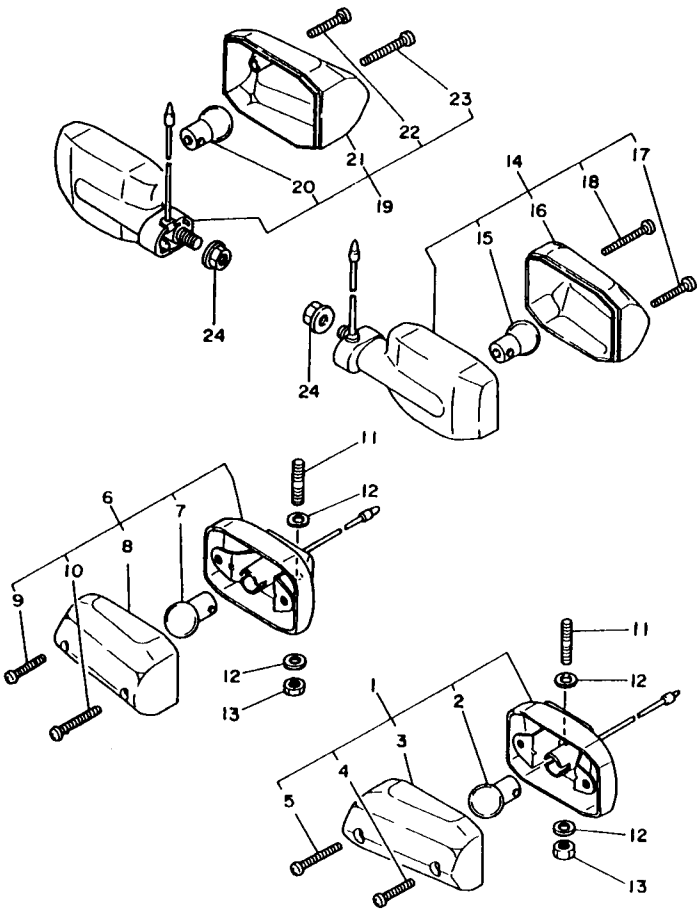


59L261-5290

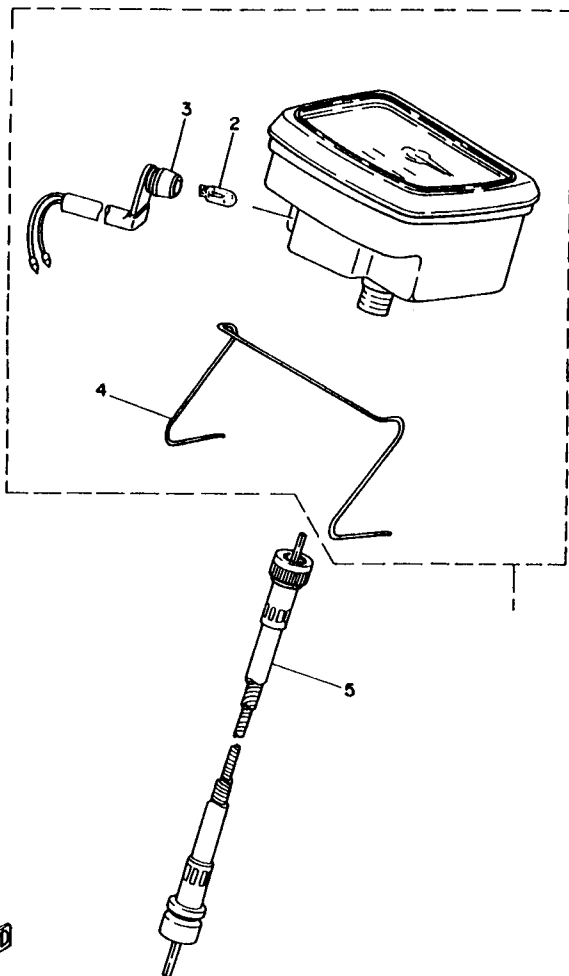
FIG. 30 FLASHER LIGHT

LUZ DE DESTELLADOR

REF. NO.	PART NO. CODIGO NO.	DESCRIPTION DESCRIPTION	4G06	4G05	3NX6	REMARKS OBSERVACION
15	3NX-H3311-00	BULB, FLASHER .BOMBILLA DE DESTELLADOR			1	
16	18A-83322-00	LENS, FLASHER 2 .LENTE DE INTERMITENTE 2	1	1		
	3NX-H3322-00	LENS, FLASHER 2 .LENTE DE INTERMITENTE 2			1	
17	98501-03028	SCREW, PAN HEAD .TORNILLO DE CABEZA CON PLANA	1	1		
	98501-03030	SCREW, PAN HEAD .TORNILLO DE CABEZA CON PLANA			1	
18	98501-03036	SCREW, PAN HEAD .TORNILLO DE CABEZA CON PLANA	1	1		
	3NX-H3333-00	SCREW, LENS FITTING .TORNILLO ACCESORIO DE LENTE			1	
19	18A-83340-10	FLASHER LIGHT ASSY 2 DESTELLADOR DE LUZ COMPL.	1	1		
	3NX-H3340-00	FLASHER LIGHT ASSY 2 DESTELLADOR DE LUZ COMPL.			1	
20	1M3-83311-10	BULB, FLASHER .BOMBILLA DE DESTELLADOR	1	1		
	3NX-H3311-00	BULB, FLASHER .BOMBILLA DE DESTELLADOR			1	
21	18A-83312-00	LENS, FLASHER .LENTE DE DESTELLADOR	1	1		
	3NX-H3312-00	LENS, FLASHER .LENTE DE DESTELLADOR			1	
22	98501-03028	SCREW, PAN HEAD .TORNILLO DE CABEZA CON PLANA	1	1		
	98501-03030	SCREW, PAN HEAD .TORNILLO DE CABEZA CON PLANA			1	
23	98501-03036	SCREW, PAN HEAD .TORNILLO DE CABEZA CON PLANA	1	1		
	3NX-H3333-00	SCREW, LENS FITTING .TORNILLO ACCESORIO DE LENTE			1	
24	95707-08500	NUT, FLANGE TUERCA DE BRIDA	2	2	2	



59L261-5290



FWD
4LDI646-3300

FIG. 31 METER

MEDIDOR

REF. NO.	PART NO. CODIGO NO.	DESCRIPTION DESCRIPTION	4GC6	4GC5	3NX6	REMARKS OBSERVACION
1	3E1-83510-10	SPEEDOMETER ASSY VELOCIMETRO COMPL.	1	1	1	KM/H
2	4N0-83516-00	BULB (6V-3W) AMPOLLETA (6V-3W)	1	1	1	
3	1LM-83520-50	SOCKET CORD ASSY ENCASTRE COMPLETO	1	1	1	
4	3E1-83515-00	SPRING, METER RESORTE DE MEDIDOR	1	1	1	
5	3E1-83550-00	SPEEDOMETER CABLE ASSY CABLE DE VELOCIMETRO COMPLETO	1	1	1	



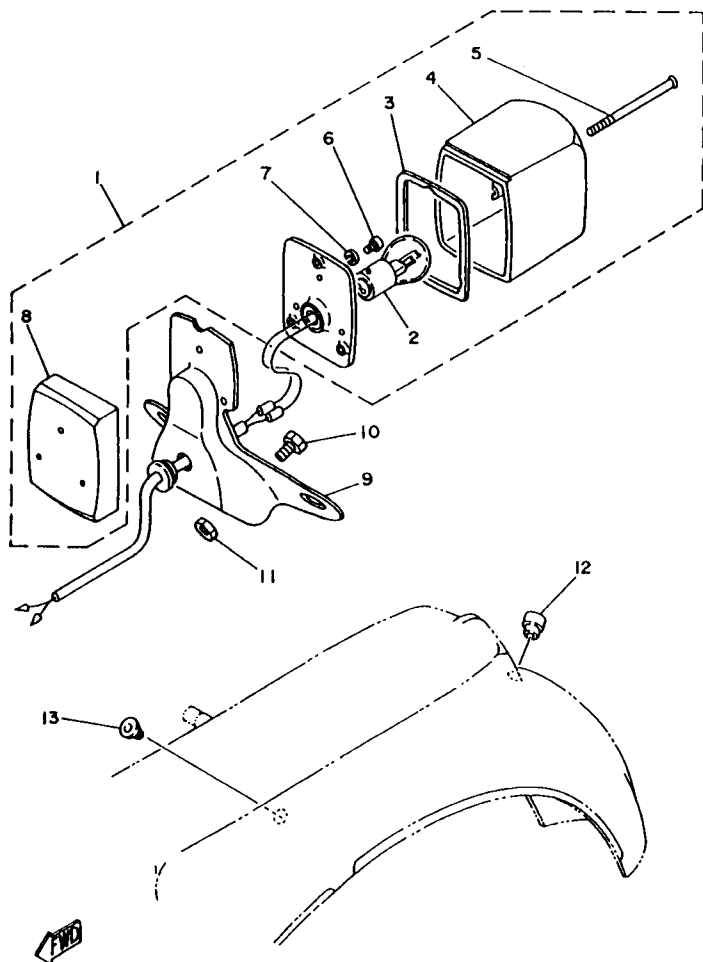
3NX3200-4340

FIG. 32 HEADLIGHT

FARO DELANTERO

REF. NO.	PART NO. CODIGO NO.	DESCRIPTION	4GC6	4GC5	3NX6	REMARKS OBSERVACION
1	3E1-84120-10	LENS ASSY LENTES COMPLETO	1	1	1	
2	3E1-84115-10	RIM, HEADLIGHT ARO DE FARO DELANTERO	1	1	1	
3	3E1-84112-10	SOCKET ENCASTRE	1	1	1	
4	3E1-84124-10	SPRING, SET JUEGO DE RESORTES	2	2	2	
5	2E9-84131-00	SCREW, RIM ADJUSTER TORNILLO AJUSTADOR DE ARO	1	1	1	
6	2E9-84132-00	SPRING, SCREW RESORTE DE TORNILLO	1	1	1	
7	248-84114-00	BULB, HADLIGHT (6V-25/25W) AMPOLLETA DE FARO DELANTERO	1	1	1	YELLOW
8	317-84147-30	BULB (6V-3W) AMPOLLETA LUZ PILOTO (6V-13W)	1	1	1	
9	90159-05028	SCREW, WITH WASHER TORNILLO CON VALONA	1	1	1	
10	4GC-84159-00	CORD, HEADLIGHT CABLE DE FARO DELANTERO	1	1		
	3NX-H4159-00	CORD, HEADLIGHT CABLE DE FARO DELANTERO			1	

E2



4LD1646-3320

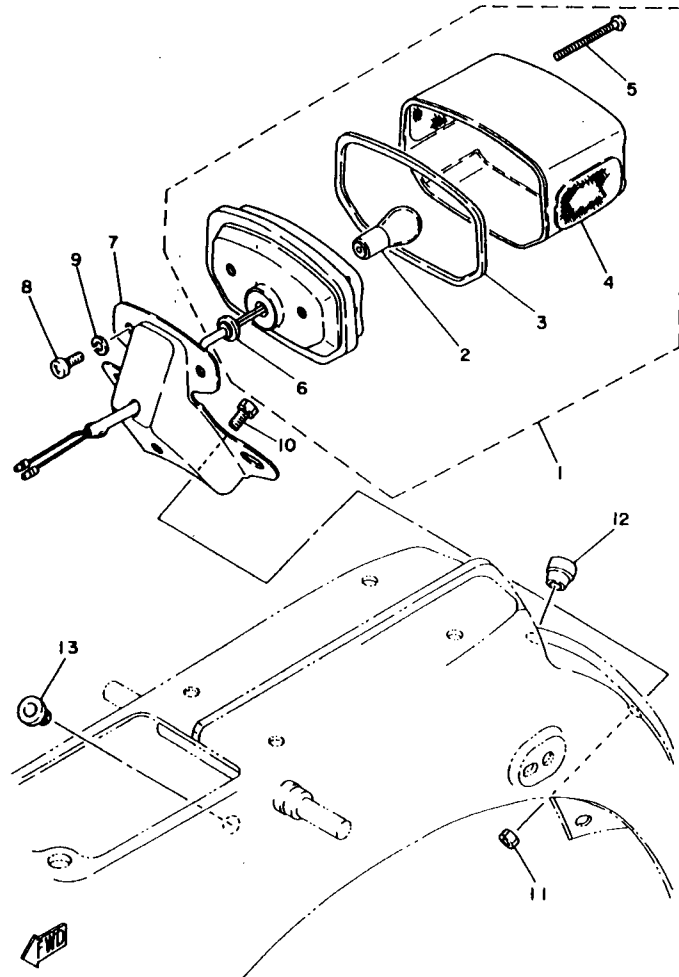
FIG. 33 TAILLIGHT

LUZ DE COLA

REF. NO.	PART NO. CODIGO NO.	DESCRIPTION DESCRIPCION	4GC6	4GC5	3NX6	REMARKS OBSERVACION
1	18Y-84510-00	TAILLIGHT UNIT ASSY FARO TRASERO COMPLETO	1	1		
2	122-84514-30	BULB (6V-17/5.3W) AMPOLLETA (6V-17/5.3W)	1	1		
3	164-84723-00	GASKET, TAIL LENS EMPAQUE LENTE FARO TRASERO	1	1		
4	164-84721-00	LENS, TAILLIGHT LENTE DE FARO TRASERO	1	1		
5	201-84724-00	SCREW, LENS FITTING TORNILLO ACCESORIO DE LENTE	3	3		
6	98501-04010	SCREW, PAN HEAD TORNILLO DE CABEZA CON PLANA	3	3		
7	92901-04100	WASHER, SPRING ARANDELA	3	3		
8	201-84716-00	COVER, TAILLIGHT CUBIERTA DE FARO TRASERO	1	1		
9	330-84551-00-35	BRACKET, LICENCE SOPORTE DE LICENCIA	1	1		SL
10	97007-06012	BOLT PERNO	2	2		
11	95307-06600	NUT TUERCA	2	2		
12	90480-12013	GROMMET TAPON	1	1		
13	90480-16112	GROMMET TAPON	1	1		

FIG. 34 TAILLIGHT 2

LUZ DE COLA 2



REF. NO.	PART NO. CODIGO NO.	DESCRIPTION DESCRIPTION	4GC6	4GC5	3NX6	REMARKS OBSERVACION
1	3NX-H4510-10	TAILLIGHT UNIT ASSY FARO TRASERO COMPLETO			1	
2	3NX-H4514-00	BULB AMPOLLETA			1	
3	3NX-H4523-00	GASKET, LENS EMPAQUE DE LENTE			1	
4	3NX-H4521-00	LENS, TAILLIGHT LENTE DE FARO TRASERO			1	
5	3NX-H4524-00	SCREW, LENS FITTING TORNILLO ACCESORIO DE LENTE			1	
6	3NX-H4718-00	GROMMET ANILLO PROTECTOR			1	
7	296-84551-00-35	BRACKET, LICENCE SOPORTE DE LICENCIA			1	SL
8	92501-06010	SCREW, PAN HEAD TORNILLO CABEZA CONICA PLANA			2	
9	92901-06100	WASHER, SPRING ARANDELA			2	
10	97002-06012	BOLT PERNO			2	
11	95302-06800	NUT TUERCA			2	
12	90480-12013	GROMMET TAPON			1	
13	90480-16112	GROMMET TAPON			1	

59L261-5320

E4

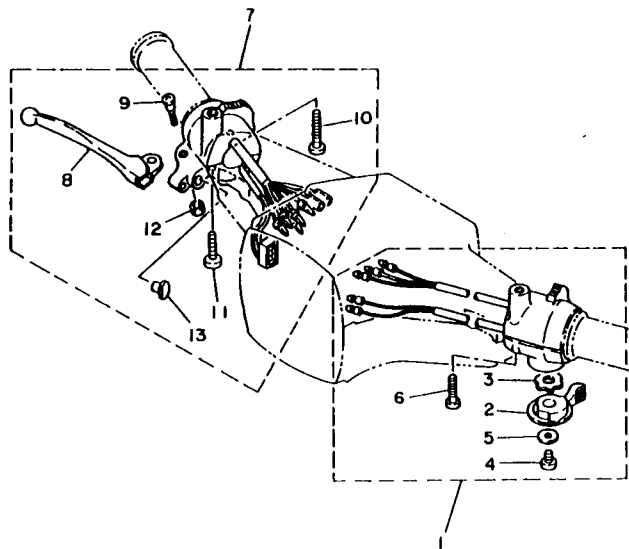


FIG. 35 HANDLE SWITCH. LEVER INTERRUPTOR DE MANIJA. PALANCA

REF. NO.	PART NO. CODIGO NO.	DESCRIPTION DESCRIPTION	4G06	4G05	3NX6	REMARKS OBSERVACION
1	18A-83975-02	SWITCH, HANDLE 2 INTERRUPTOR MANIJA 2	1	1	1	
2	18A-83941-00	LEVER, STARTER PALANCA DE ARRANQUE	1	1	1	
3	90209-10131	WASHER ARANDELA DE SEPARACION	1	1	1	
4	98507-06008	SCREW, PAN HEAD TORNILLO DE CABEZA CON PLANA	1	1	1	
5	92907-06600	WASHER, PLATE ARANDELA	1	1	1	
6	98507-05025	SCREW, PAN HEAD TORNILLO DE CABEZA CON PLANA	3	3	3	
7	59L-82920-01	LEVER HOLDER ASSY (RIGHT) SOPORTE DE LEVA COMPLT 2	1	1	1	
8	122-83922-01	LEVER 2 PALANCA 2	1	1	1	
9	90149-05119	SCREW TORNILLO DE REGLAJE	1	1	1	
10	98507-05035	SCREW, PAN HEAD TORNILLO DE CABEZA CON PLANA	1	1	1	
11	98507-05025	SCREW, PAN HEAD TORNILLO DE CABEZA CON PLANA	2	2	2	
12	95607-05100	NUT, U TUERCA AUTOBLOCANTE	1	1	1	
13	503-83956-10	CAP 1 TAPA 1	1	1	1	



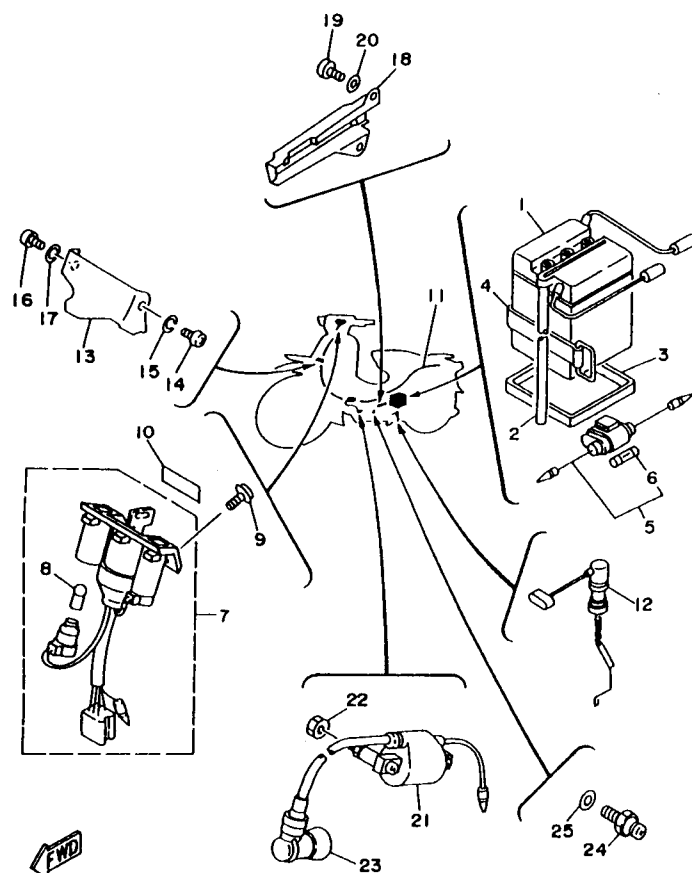
3VJ1440-0330

E5

FIG. 36 ELECTRICAL 1

EQUIPO ELECTRICO 1

REF. NO.	PART NO. CODIGO NO.	DESCRIPTION DESCRIPTION	4GC6	4GC8	3NX6	REMARKS OBSERVACION
1	34U-82110-10	BATTERY ASS'Y (GS 6N4-2A-9) BATERIA COMPLETA (GS 6N4-2A-9)	1	1	1	
2	90445-08170	HOSE TUBO	1	1	1	
3	268-82122-00	SEAT, BATTERY ASIENTO DE BATERIA	1	1		
	3NX-H2122-00	SEAT, BATTERY ASIENTO DE BATERIA			1	
4	1E6-82131-00	BAND, BATTERY TIRANTE DE BATERIA	1	1	1	
5	55K-82150-01	FUSE HOLDER ASSY PORTA-FUSIBLES COMPLETO	1	1	1	
6	116-82151-00	FUSE (10A) FUSIBLE (10A)	2	2	2	
7	4GC-8251A-00	MAIN SWITCH PILOT LIGHT ASSY CONJUNTO DE LLAVE Y CONTROL	1	1	1	
8	122-83516-10	BULB (6V-3W) AMPOLLETA (6V-3W)	2	2	2	
9	90159-04191	SCREW, WITH WASHER TORNILLO CON VALONA	2	2	2	
10	3E1-82505-10	EMBLEM, MAIN SWITCH EMBLEMA INTERRUPTOR PPAL.	1	1	1	
11	4GC-82590-10	WIRE HARNESS ASSY CONJUNTO DE CABLES	1	1		
	3NX-H2590-00	WIRE HARNESS ASSY CONJUNTO DE CABLES			1	
12	4GL-82530-00	STOP SWITCH ASSY INTERRUPTOR DE PARADA COMPLETO	1	1	1	
13	18A-82581-00	STAY, CORD CLAMP SOPORTE DE GRAMPA DE CABLE	1	1	1	
14	97007-06016	BOLT PERNO	1	1	1	
15	92907-06600	WASHER, PLATE ARANDELA	1	1	1	
16	97007-06012	BOLT PERNO	1	1	1	
17	92907-06600	WASHER, PLATE ARANDELA	1	1	1	
18	58K-21162-01-P4	HOLDER, CLUTCH CABLE SOPORTE DE CABLE DE EMBRAGUE	1	1	1	DRC2
	58K-21162-01-H9	HOLDER, CLUTCH CABLE SOPORTE DE CABLE DE EMBRAGUE	1	1	1	BG
	58K-21162-01-P5	HOLDER, CLUTCH CABLE SOPORTE DE CABLE DE EMBRAGUE	1	1	1	VDBM3
19	98507-06014	SCREW, PAN HEAD TORNILLO DE CABEZA CON PLANA	2	2	2	
20	92907-06600	WASHER, PLATE ARANDELA	2	2	2	
21	4AV-82310-10	IGNITION COIL ASSY BOBINA DE ENCENDIDO COMPLETA	1	1	1	
22	95307-06600	NUT TUERCA	2	2	2	
23	2VT-82370-00	PLUG CAP ASSY TAPON DE BUJIA COMPLT	1	1	1	



4GC3200-6350

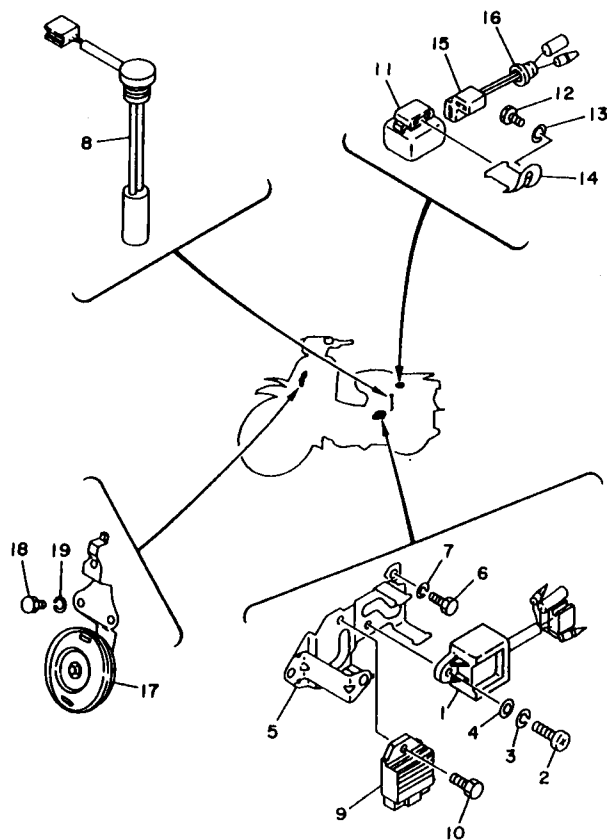


FIG. 37 ELECTRICAL 2

EQUIPO ELECTRICO 2

REF. NO.	PART NO. CODIGO NO.	DESCRIPTION DESCRIPTION	4G06	4G05	3N06	REMARKS OBSERVACION
1	4GC-85540-10	C.D.I. UNIT ASSY UNIDAD C.D.I. COMPLETA	1	1	1	
2	98507-06020	SCREW, PAN HEAD TORNILLO DE CABEZA CON PLANA	1	1	1	
3	92907-06100	WASHER, SPRING ARANDELA	1	1	1	
4	92907-06600	WASHER, PLATE ARANDELA	1	1	1	
5	3KX-2172L-00	BRACKET 2 SOSTEN	1	1	1	
6	97007-06012	BOLT PERNO	2	2	2	
7	92907-06600	WASHER, PLATE ARANDELA	2	2	2	
8	3KX-85720-00	OIL LEVEL GAUGE ASSY MEDIDOR DE NIVEL DE ACEITE	1	1	1	
9	3AH-81960-00	RECTIFIER & REGULATOR ASSY RECTIFICADOR Y REGULADOR	1	1	1	
10	95027-06016	BOLT, FLANGE PERNO, DE BRIDA	1	1	1	
11	41G-83350-10	FLASHER RELAY ASSY RELE DE DESTELLADOR COMPL.	1	1	1	
12	97007-06014	BOLT PERNO	1	1	1	
13	92907-06100	WASHER, SPRING ARANDELA	1	1	1	
14	474-83352-00	BRACKET, FLASHER RELAY 1 SOPORTE RELE DESTELLADOR	1	1	1	
15	1W7-83355-00	CORD, FLASHER RELAY CABLE DE RELE DE DESTELLADOR	1	1	1	
16	90480-12013	GROMMET TAPON	1	1	1	
17	19M-83371-10	HORN BOCINA	1	1	1	
18	97007-06010	BOLT PERNO	2	2	2	
19	92907-06100	WASHER, SPRING ARANDELA	2	2	2	



48C1600-3350

NUMERICAL INDEX
INDICE NUMERICO

PART NO. CODIGO NO.	REF. NO.	PART NO. CODIGO NO.	REF. NO.	PART NO. CODIGO NO.	REF. NO.	PART NO. CODIGO NO.	REF. NO.	PART NO. CODIGO NO.	REF. NO.	PART NO. CODIGO NO.	REF. NO.
3NX-E5418-00	B - 10	3NX-H3311-00	D - 14	300-13505-03	B - 5	1W7-15492-00	B - 11	4GL-21288-00	C - 4	4GL-22151-00	C - 9
3NX-E5492-00	B - 11	3NX-H3312-00	D - 13	4GC-13610-00	B - 5	156-15618-01	B - 12	3AC-21288-00	C - 4	3NX-22210-00	C - 10
3NX-E5618-00	B - 12		D - 14	300-13613-03	B - 5	5T9-15620-00	B - 12	3E1-21308-00	C - 4	296-22310-02-H9	C - 9
3NX-E5620-00	B - 12	3NX-H3320-00	D - 13	300-13618-00	B - 5	384-15635-00	B - 13	3AC-21322-00	C - 6	296-22310-02-P5	C - 9
3NX-E8111-00	C - 3	3NX-H3322-00	D - 13	300-13621-10	B - 5	2T4-15637-01	B - 13	296-21345-00	C - 4	296-22310-02-P6	C - 9
3NX-F172K-00	C - 8		D - 14	300-13622-10	B - 5	3K7-15641-00	B - 12	18A-21397-00	C - 4	148-22315-00	C - 9
3NX-F172W-00	C - 8	3NX-H3330-00	D - 13	59L-14101-00	B - 7	296-15644-00	B - 12	296-21511-23-H9	C - 5	517-23310-03-H9	C - 12
3NX-F1751-00	C - 8	3NX-H3333-00	D - 13	18A-14103-00	B - 7	517-15680-01	B - 12	296-21511-23-P4	C - 5	517-23310-03-P3	C - 12
3NX-F1773-00	C - 8		D - 14	59L-14104-00	B - 7	1W7-15684-01	B - 12	296-21511-23-P5	C - 5	517-23310-03-P4	C - 12
3NX-F2117-00	C - 9	3NX-H3340-00	D - 14	18A-14106-00	B - 7	296-15671-00	B - 12	1LG-21513-00	C - 5	296-23350-02	C - 13
3NX-F2315-00	C - 9		E - 2	21W-14107-12	B - 7	1W7-15676-00	B - 12	1A8-21518-00	C - 5	296-23361-02	C - 12
3NX-F3445-00	C - 11	3NX-H4510-10	E - 4	45V-14112-25	B - 7	56H-18110-00-30	B - 13	116-21621-00	C - 5	296-23362-09	C - 12
3NX-F3455-00	C - 11	3NX-H4514-00	E - 4	296-14131-00	B - 7	3E5-18150-02	B - 13	3KX-2171L-00	C - 6	296-23363-01	C - 12
3NX-F4181-00	C - 14	3NX-H4521-00	E - 4	127-14135-00	B - 7	122-18184-00	B - 13	3KX-2171M-00	C - 6	296-23364-02	C - 12
1JM-F4710-00	D - 2	3NX-H4523-00	E - 4	45V-14141-12	B - 7	517-18180-00	B - 13	4GL-2171M-00	C - 6	296-23371-02	C - 12
3NX-F4723-00	D - 2	3NX-H4524-00	E - 4	193-14142-17	B - 7	132-18346-00	C - 2	297-21711-01-H9	C - 6	296-23372-09	C - 12
3NX-F4741-00	D - 2	3NX-H4718-00	E - 4	18A-14143-17	B - 7	527-18520-10	B - 13	297-21711-01-P4	C - 6	296-23381-01	C - 12
1JM-F4750-00	D - 2	4GC-W2211-00-H9	C - 9	307-14169-10	B - 7	3E5-18521-00	B - 13	297-21711-01-P5	C - 6	296-23382-01	C - 12
1JM-F4810-00	D - 2	4GC-W2211-00-P3	C - 9	127-14171-00	B - 7	517-18524-10	B - 13	18A-21712-00	C - 6	116-23383-00	C - 12
59L-F5371-00	D - 6	4GC-W2211-00-P4	C - 9	296-14184-01	B - 7	517-18524-20	B - 13	18A-2172K-00	C - 8	3AC-23384-00	C - 12
3NX-F5412-00	D - 5	19M-W2472-00	C - 15	2E9-14185-00	B - 7	517-18524-30	B - 13	3KX-2172L-00	E - 8	18A-23391-00-H9	C - 11
3NX-F5438-00	D - 5	3AC-W2536-00	D - 3	127-14186-00	B - 7	517-18550-10	B - 13	4GC-2172L-00	C - 8	18A-23391-00-P6	C - 11
3NX-F6240-00	D - 7	4KN-W2536-11	D - 5	12R-14191-00	B - 7	517-18561-01	B - 13	18A-2172W-01	C - 8	18A-23391-00-P7	C - 11
3NX-F6241-00	D - 7	5T0-11111-00	B - 2	296-14198-00	B - 7	527-18571-01	B - 13	3AC-21721-00-H9	C - 6	1AJ-23397-10	C - 11
3NX-F6242-00	D - 7	463-11161-01	B - 2	18A-14411-00	B - 5	1W7-17211-12	B - 15	3AC-21721-00-P4	C - 6	3E1-23408-00	C - 13
59L-F6280-00	D - 7	3E5-11162-00	B - 2	35X-14412-00	B - 5	1W7-17221-20	B - 15	3AC-21721-00-P5	C - 6	22F-23411-01	C - 11
3NX-F6288-00	C - 4	35X-11181-00	B - 2	35X-14451-00	B - 5	1W7-17231-30	B - 15	18A-21722-00	C - 7	22F-23412-01	C - 11
59L-F6290-00	D - 7	18E-11311-00	B - 2	1W7-14453-01	B - 5	1W7-17410-00	B - 15	4GC-2173E-30	C - 6	22F-23414-01	C - 11
3NX-F7111-00	D - 9	4AW-11351-00	B - 2	5U8-14454-00	B - 5	1W7-17421-10	B - 15	4GC-2173E-40	C - 6	122-23416-00	C - 11
3NX-F7112-00	D - 9	1HA-11400-00	B - 3	5U8-14457-00	B - 5	296-17471-00	B - 15	4GC-2173E-50	C - 6	296-23445-00	C - 11
3NX-F7114-00	D - 9	1W7-11412-00	B - 3	5U8-14458-00	B - 5	58H-18101-04	C - 3	4GC-2173F-30	C - 6	296-23455-00	C - 11
3NX-F7115-00	D - 9	1HA-11422-00	B - 3	1W7-14611-01	B - 9	18A-18111-00	C - 3	4GC-2173F-40	C - 6	3E1-23461-00	C - 11
3NX-F7211-01	D - 9	14N-11610-00	B - 3	3MT-14613-00	B - 9	278-18127-01	C - 3	4GC-2173F-50	C - 6	296-23463-01	C - 11
3NX-F7231-00	D - 9	14N-11610-10	B - 3	35X-14710-00	B - 9	296-18140-02	C - 2	18A-21731-00-H9	C - 6	18A-24110-01-H9	C - 14
3NX-F7311-00	D - 9	14N-11610-20	B - 3	109-14713-00	B - 9	1W7-18511-01	C - 2	18A-21731-00-P5	C - 6	18A-24110-01-P6	C - 14
3NX-F7411-00	D - 10	18E-11631-00-98	B - 3	4AW-14714-01	B - 9	1W7-18512-02	C - 2	18A-21731-00-P6	C - 6	18A-24110-01-P7	C - 14
3NX-F7412-00	D - 10	527-11633-00	B - 3	527-14753-50	B - 9	2N8-18531-00	C - 2	18A-21741-00-H9	C - 7	296-24181-00	C - 14
59M-F7413-00	D - 10	18E-11635-00	B - 3	59L-1490J-00	B - 7	2N8-18540-00	C - 2	18A-21741-00-P5	C - 7	4N0-24181-00	C - 4
3NX-F7414-00	D - 10	18E-11636-00	B - 3	1W7-15111-03	B - 10	136-18542-00	C - 2	18A-21741-00-P6	C - 7	4GC-24240-30	C - 14
3NX-F7417-00	D - 10	1W7-11651-00	B - 3	1W7-15121-03	B - 10	296-18561-00	C - 2	18A-21751-01	C - 8	4GC-24240-40	C - 14
59L-F7430-00	C - 9	2Y1-11681-00	B - 3	300-15128-00	B - 10	296-18562-01	C - 2	18A-21752-00	C - 8	4GC-24240-50	C - 14
23A-F7432-00	C - 9	18E-13101-00	B - 4	5T9-15316-01	B - 10	4GC-21110-00-H9	C - 4	18A-21770-01	C - 8	15K-24260-03	C - 14
59L-F7433-00	C - 9	2T5-13124-00	B - 4	5U8-15316-01	B - 10	4GC-21110-00-P3	C - 4	18A-21773-01	C - 8	3L5-24268-00	C - 14
3NX-F8100-00	C - 4	384-13138-00	B - 4	517-15382-02	B - 11	4GC-21110-00-P4	C - 4	18A-21778-00	C - 4	18A-24317-00	C - 14
3NX-H2122-00	E - 6	296-13147-00	B - 4	2N8-15411-00	B - 11	58K-21162-01-H9	E - 6	4GC-21781-70	C - 6	164-24319-00	C - 8
3NX-H2590-00	E - 6	384-13181-02	B - 4	517-15416-01	B - 10	58K-21162-01-P4	E - 6	180-22117-00	C - 9	3AC-24500-00	C - 14
3NX-H3310-00	D - 13	384-13174-00	B - 4	517-15421-01	B - 11	58K-21162-01-P5	E - 6	102-22123-00	C - 9	4X8-24512-00	C - 14
3NX-H3311-00	D - 13	53F-13178-00	B - 4	4AW-15451-00	B - 11	527-21165-01	C - 15	109-22141-01	C - 9	3AJ-24523-00	C - 14

NUMERICAL INDEX
INDICE NUMERICO

PART NO. CODIGO NO.	REF. NO.	PART NO. CODIGO NO.	REF. NO.	PART NO. CODIGO NO.	REF. NO.	PART NO. CODIGO NO.	REF. NO.	PART NO. CODIGO NO.	REF. NO.	PART NO. CODIGO NO.	REF. NO.	PART NO. CODIGO NO.	REF. NO.
3AJ-24534-00	C - 14	122-25438-10	D - 5	296-28349-01	D - 11	3E1-84124-10	E - 2	90159-05028	D - 7	90209-15178	B - 15		
2MM-24602-02	C - 14	3E1-26210-10-98	D - 7	296-28373-00	D - 11	2E9-84131-00	E - 2		E - 2	90209-15179	B - 15		
2MM-24612-00	C - 14	3E1-26215-00-33	D - 7	18Y-81313-M0	D - 12	2E9-84132-00	E - 2	90159-05131	C - 9	90209-15180	B - 15		
214-24708-00	C - 15	3E1-26240-10	D - 7	3AH-81980-00	E - 8	317-84147-30	E - 2	90159-08013	C - 6	90209-20159	B - 3		
3AC-24710-00	D - 2	116-26241-00	D - 7	34U-82110-10	E - 6	4GC-84159-00	E - 2	90159-08018	C - 11	90215-11012	C - 11		
1W7-24718-01	C - 15	116-26242-00	D - 7	268-82122-00	E - 6	18Y-84510-00	E - 3	90159-08058	B - 6	90240-06052	C - 9		
1AJ-24723-00	D - 2	3E1-26244-00	D - 7	1E8-82131-00	E - 6	122-84514-30	E - 3	90159-08093	C - 6	90249-12008	D - 8		
1AJ-24724-00	D - 2	3E1-26245-00	D - 8	55K-82150-01	E - 6	298-84551-00-35	E - 4	90187-03004	D - 7		D - 9		
214-24726-A0	C - 15	3J0-26261-00	D - 7	116-82151-00	E - 6	330-84551-00-35	E - 3	90170-10105	B - 4	90280-03017	B - 3		
296-24726-00	D - 2	3J0-26262-00	D - 7	4AV-82310-10	E - 6	201-84716-00	E - 3	90170-18165	D - 6	90282-04064	B - 13		
298-24728-A0	C - 15	360-26266-00	D - 7	2VT-82370-00	E - 6	164-84721-00	E - 3	90171-10004	D - 4	90338-05056	C - 4		
19M-24731-00	C - 15	2T5-26267-00	D - 7	3E1-82505-10	E - 6	164-84723-00	E - 3	90171-12005	D - 6	90338-06143	C - 12		
298-24738-A0	C - 15	3J0-26272-00	D - 8	4GC-8251A-00	E - 6	201-84724-00	E - 3	90173-08004	C - 11	90338-07043	C - 4		
23N-24741-00	C - 15	2T5-26273-00	D - 7	4GL-82530-00	E - 6	3T5-85520-M1	D - 12	90175-08013	D - 8		C - 9		
298-24748-00	C - 15	3E1-26274-00	D - 7	296-82540-01	E - 7	4GC-85540-10	E - 8		D - 9	90340-12005	B - 10		
298-24750-00	D - 2	296-26288-01	C - 4	341-82543-00	E - 7	4GC-85550-00	D - 12	90176-10073	C - 10	90387-062F5	B - 5		
4GC-24768-00	C - 15	1Y0-26290-00	D - 7	18A-82581-00	E - 6	4GC-85580-01	D - 12	90179-06411	D - 8	90387-10277	D - 4		
1AJ-24810-00	D - 2	1Y0-26290-10	D - 7	4GC-82590-10	E - 6	2AL-85580-M0	D - 12		D - 9	90387-12412	D - 6		
296-24830-00	C - 15	3E1-26311-04	D - 7	296-82593-00	D - 8	3KX-85720-00	E - 8	90179-07381	B - 2	90387-18143	D - 6		
109-25104-10	D - 3	18A-26312-01	D - 7	59L-82920-01	E - 5	90101-06278	D - 5	90179-08639	D - 5	90387-20803	B - 3		
517-25111-00-35	D - 3	3E1-26321-03	D - 7	18A-83310-10	D - 13		D - 3	90179-12659	B - 13	90401-10029	B - 4		
195-25115-00	D - 3	3E1-26331-00	D - 8	1M3-83311-10	D - 13	90101-06394	B - 10	90179-18190	B - 14	90401-10035	C - 12		
322-25118-00	D - 4	3E1-26341-00	D - 8		D - 14	90101-08672	D - 5	90179-25033	C - 11	90413-05015	B - 7		
18A-25121-00-35	D - 3	3E1-26393-00	D - 8	18A-83312-00	D - 13	90101-10778	C - 10	90179-25050	C - 11	90430-04004	B - 4		
296-25135-00	D - 3	266-27111-10	D - 9		D - 14	90105-08223	C - 4	90183-04047	D - 11	90430-12227	B - 10		
109-25136-00	D - 3	517-27112-01	D - 9	18A-83320-10	D - 13	90105-10701	C - 4	90185-10091	C - 9	90445-05390	B - 7		
102-25137-00	D - 4	102-27114-A0	C - 15	18A-83322-00	D - 13	90108-06024	C - 15	90201-05029	C - 14	90445-070A7	B - 8		
296-25138-00	D - 3	116-27114-00	D - 9		D - 14		D - 2	90201-081A5	D - 6	90445-070A8	B - 8		
183-25149-00	D - 3	128-27114-00	C - 15	18A-83330-10	D - 13	90108-063F8	C - 2	90201-08380	D - 11	90445-08170	E - 6		
3E1-25155-00	D - 3	109-27115-00	D - 9	18A-83340-10	D - 14	90109-08034	D - 9	90201-08778	B - 5	90445-091K4	C - 14		
296-25181-02	D - 4	3AB-27211-01	D - 9	41G-83350-10	E - 8	90109-08183	D - 6	90201-07076	D - 3	90460-37026	B - 5		
401-25181-01	D - 6	18A-27231-00	D - 9	47A-83352-00	E - 8	90109-08688	D - 10	90201-08310	C - 11	90467-08003	C - 14		
18E-25304-00	D - 5	18A-27311-10	D - 9	1W7-83355-00	E - 8	90109-08692	C - 12	90201-086P8	C - 4		C - 8		
18A-25311-00-35	D - 5	18A-27411-01	D - 9	19M-83371-10	E - 8	90116-08282	D - 13	90201-10140	C - 10	90468-02033	B - 4		
102-25315-00	D - 5	18A-27412-00	D - 10	3E1-83510-10	D - 15	90116-07035	B - 2	90201-12535	B - 3	90468-10050	C - 15		
31J-25321-00-35	D - 5	441-27413-01	D - 10	3E1-83515-00	D - 15	90149-04135	B - 4	90201-12575	C - 3	90468-12007	D - 6		
3Y8-2533A-01	D - 3	18A-27414-00	D - 10	122-83516-10	E - 6	90149-05119	E - 5	90201-126A7	C - 10	90468-16090	B - 13		
	D - 5	18A-27417-00	D - 10	4N0-83516-00	D - 15	90149-08011	C - 14	90201-20268	B - 15	90468-26048	B - 12		
3Y8-25351-00	D - 5	120-27430-02	C - 9	1LM-83520-50	D - 15	90149-08154	C - 4	90201-20269	D - 3	90480-10005	B - 4		
	D - 5	120-27431-00	C - 9	3E1-83550-00	D - 15	90149-08157	B - 10	90201-20279	C - 8	90480-12013	E - 3		
	D - 5	120-27432-02	C - 9	122-83922-01	E - 5	90150-08032	C - 2	90201-20685	B - 15		E - 4		
1T9-25355-00	D - 5	120-27433-00	C - 9	18A-83941-00	E - 5	90151-05055	D - 12	90202-05193	C - 14		E - 8		
18A-25364-00	D - 5	4VL-28100-00	C - 4	503-83958-10	E - 5	90152-05008	C - 13	90206-19027	B - 12	90480-12314	B - 5		
296-25368-01	D - 5	18A-28311-00	D - 11	18A-83975-02	E - 5	90153-08083	C - 11	90206-12015	B - 13	90480-16112	E - 3		
18A-25371-00	D - 6	3E5-28315-00	D - 11	3E1-84112-10	E - 2	90155-08002	C - 13	90208-18019	B - 14		E - 4		
102-25387-03	D - 5	116-28316-01	D - 11	248-84114-00	E - 2	90159-04191	E - 6	90209-08018	C - 5	90480-21038	B - 10		
127-25388-01	D - 6	18A-28322-00	D - 11	3E1-84115-10	E - 2	90159-05022	D - 7	90209-10131	E - 5	90480-22198	C - 8		
102-25389-00	D - 6	296-28329-00	D - 11	3E1-84120-10	E - 2	90159-05026	C - 5	90209-12280	B - 13	90501-06611	D - 7		

NUMERICAL INDEX
INDICE NUMERICO

PART NO. CODIGO NO.	REF. NO.	PART NO. CODIGO NO.	REF. NO.	PART NO. CODIGO NO.	REF. NO.	PART NO. CODIGO NO.	REF. NO.	PART NO. CODIGO NO.	REF. NO.	PART NO. CODIGO NO.	REF. NO.
90501-10245	D - 9	92907-08100	B - 9	93451-08094	B - 13	95707-08500	C - 4	98507-06016	C - 5		
90501-10602	B - 13		D - 6	93503-16003	C - 11		D - 14		D - 11		
90501-12088	B - 13	92907-08200	D - 6	93505-08030	B - 13	97002-08012	E - 4	98507-08020	C - 11		
90506-08122	C - 3	92907-08400	C - 5	93509-32012	B - 15	97007-06010	C - 4		E - 8		
90506-10184	C - 2	92907-08600	C - 11	93604-22050	C - 2		E - 8	98507-06030	B - 5		
90506-15260	D - 3		C - 14	93608-14081	C - 2	97007-06012	C - 15	98507-06035	B - 10		
	D - 5		C - 15	93700-04002	C - 12		C - 6		B - 11		
90506-20041	D - 9		D - 2	93700-06004	C - 13		E - 3	98507-06040	B - 11		
90506-25047	D - 9	92907-10100	C - 4	93812-13022	B - 15		E - 6		D - 11		
90506-29054	D - 9	92907-10600	C - 10	94122-172T1	D - 3		E - 8	98507-06045	B - 10		
90506-26136	B - 12		C - 12	94125-172T3	D - 5	97007-06014	E - 8		B - 11		
90506-26393	D - 3		D - 10	94222-17269	D - 3	97007-06016	E - 6	98507-06050	B - 10		
90506-320A6	C - 3	93101-10001	B - 4		D - 6	97007-06030	B - 6	98507-06100	B - 11		
90580-10292	D - 3	93101-12004	C - 3	94225-17309	D - 3	97007-06040	B - 5	98507-08010	B - 10		
90580-12145	D - 5	93102-20143	B - 15		D - 6	97007-06045	B - 5	98511-04012	D - 12		
90580-17146	B - 13	93103-25098	B - 3	94322-17078	D - 4	97007-08016	C - 11	98511-04025	D - 12		
91401-18015	C - 10	93103-32099	B - 3		D - 6		C - 14	98802-05100	B - 7		
91401-20012	D - 9	93104-07003	D - 3	94412-17498	D - 4		D - 2	99001-03600	B - 13		
91401-20015	D - 6	93104-11053	B - 11	94414-17003	D - 6	97007-08020	B - 9	99001-10600	C - 2		
91401-20020	D - 4	93105-47007	D - 3	94580-52100	D - 6		C - 15		C - 3		
91401-30025	D - 6	93106-20001	D - 3	94680-52001	D - 6	97017-08025	B - 12	99002-09600	C - 2		
91608-30014	B - 4	93106-30004	D - 5	94701-00108	B - 2	97027-08020	C - 3	99009-15400	B - 12		
91609-40016	C - 2	93109-15001	B - 12	94701-00175	B - 2	97027-10020	D - 10	99009-19400	B - 12		
91701-05055	C - 15	93210-09729	C - 2	95027-06016	E - 8	97301-05016	C - 14	99009-20400	D - 3		
92501-06010	E - 4	93210-14104	D - 4	95302-06600	E - 4	97301-06016	C - 15	99530-10114	B - 11		
92901-04100	B - 7	93210-18023	B - 3	95307-05600	B - 9	98501-03028	D - 13	99530-12016	B - 10		
	D - 12	93210-19123	B - 11	95307-06600	C - 15		D - 14				
	E - 3	93210-26240	B - 4		C - 5	98501-03030	D - 13				
92901-06100	C - 15	93210-29282	B - 4		D - 2		D - 14				
	E - 4	93210-41041	D - 5		D - 3	98501-03036	D - 13				
92907-03100	B - 5	93210-98202	B - 13		D - 5		D - 14				
92907-05600	B - 9	93306-00438	D - 5		D - 6	98501-04006	D - 12				
	C - 9	93306-20301	B - 15		E - 3	98501-04010	B - 7				
92907-06100	B - 5	93306-20401	B - 15		E - 6		D - 12				
	D - 2	93306-20517	B - 3	95307-06700	D - 13		E - 3				
	D - 6	93306-30003	D - 3	95307-08700	B - 9	98501-04018	B - 7				
	E - 8	93306-30102	D - 5		C - 13	98502-05030	B - 7				
92907-06200	D - 13	93306-30103	D - 5		C - 5	98503-03008	C - 14				
92907-06600	B - 5	93310-11268	B - 3		D - 6	98507-03008	B - 5				
	C - 11	93310-420F2	B - 3		D - 7	98507-05014	C - 9				
	C - 15	93315-23208	C - 2		D - 9	98507-05020	B - 4				
	C - 5	93320-41202	B - 15	95307-12700	C - 10	98507-05025	E - 5				
	C - 6	93410-20036	B - 15	95317-12600	B - 3	98507-05035	B - 4				
	D - 11	93430-07012	B - 4	95607-05100	E - 5		E - 5				
	D - 9	93430-12008	D - 9	95607-06200	D - 2	98507-06008	E - 5				
	E - 5	93440-15012	B - 15	95607-08200	B - 9	98507-06012	B - 15				
	E - 6	93450-13022	B - 3		C - 11		C - 6				
	E - 8	93450-28049	B - 15	95707-06500	D - 13	98507-06014	E - 6				